

Product datasheet for **TA355875**

Stat5b Rabbit Polyclonal Antibody

Product data:

Product Type:	Primary Antibodies
Applications:	IHC, WB
Reactivity:	Human
Host:	Rabbit
Clonality:	Polyclonal
Immunogen:	The immunogen is a synthetic peptide directed towards the middle region of mouse STAT5B
Specificity:	Expected reactivity: Cow, Dog, Goat, Guinea Pig, Horse, Human, Mouse, Rabbit, Rat, Sheep, Zebrafish Homology: Cow: 93%; Dog: 93%; Goat: 86%; Guinea Pig: 93%; Horse: 93%; Human: 93%; Mouse: 100%; Rabbit: 93%; Rat: 100%; Sheep: 86%; Zebrafish: 93%
Formulation:	Liquid. Purified antibody supplied in 1x PBS buffer with 0.09% (w/v) sodium azide and 2% sucrose. <i>Note that this product is shipped as lyophilized powder to China customers.</i>
Concentration:	lot specific
Purification:	Protein A purified
Conjugation:	Unconjugated
Storage:	For short term use, store at 2-8°C up to 1 week. For long term storage, store at -20°C in small aliquots to prevent freeze-thaw cycles.
Stability:	Shelf life: one year from despatch.
Predicted Protein Size:	86kDa
Gene Name:	signal transducer and activator of transcription 5B
Database Link:	NP_035619 Entrez Gene 6777 Human P42232
Background:	Stat5 is a member of the STAT family. It mediates signaling of many cytokines and growth factors
Synonyms:	STAT5

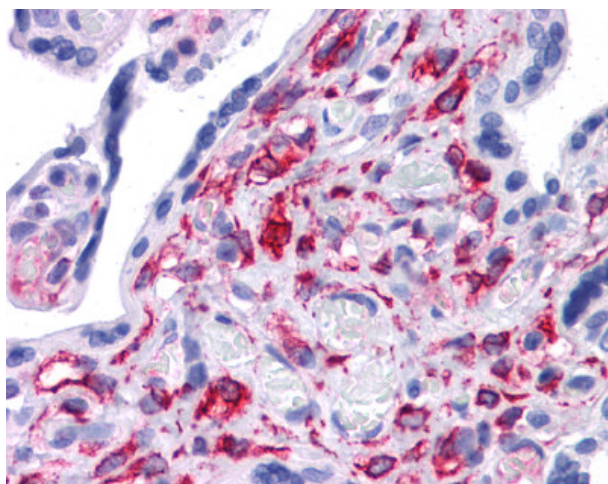


[View online »](#)

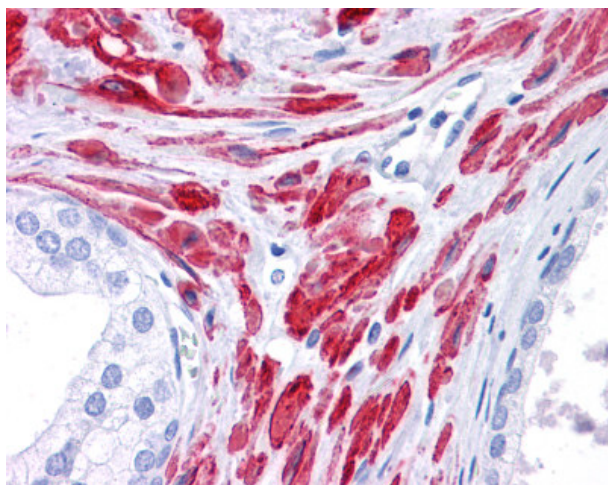
Product images:



WB Suggested Anti-STAT5B Antibody Titration:
5.0ug/ml
Positive Control: Muscle lysate



Human Prostate



Human Prostate