

Product datasheet for **TA355871**

Klf4 Rabbit Polyclonal Antibody

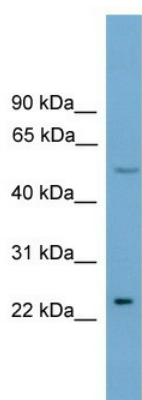
Product data:

| | |
|-------------------------|---|
| Product Type: | Primary Antibodies |
| Applications: | WB |
| Reactivity: | Mouse |
| Host: | Rabbit |
| Clonality: | Polyclonal |
| Immunogen: | The immunogen is a synthetic peptide corresponding to a region of Mouse |
| Specificity: | Expected reactivity: Cow, Dog, Guinea Pig, Horse, Human, Mouse, Rat, Sheep Homology: Cow: 83%; Dog: 83%; Guinea Pig: 83%; Horse: 83%; Human: 83%; Mouse: 100%; Rat: 100%; Sheep: 83% |
| Formulation: | Liquid. Purified antibody supplied in 1x PBS buffer with 0.09% (w/v) sodium azide and 2% sucrose. <i>Note that this product is shipped as lyophilized powder to China customers.</i> |
| Concentration: | lot specific |
| Purification: | Affinity Purified |
| Conjugation: | Unconjugated |
| Storage: | For short term use, store at 2-8°C up to 1 week. For long term storage, store at -20°C in small aliquots to prevent freeze-thaw cycles. |
| Stability: | Shelf life: one year from despatch. |
| Predicted Protein Size: | 51kDa |
| Gene Name: | Kruppel-like factor 4 (gut) |
| Database Link: | NP_034767 Entrez Gene 16600 Mouse Q60793 |
| Background: | The function of this protein remains unknown. |
| Synonyms: | EZF; GKLF |



[View online »](#)

Product images:



WB Suggested Anti-Klf4 Antibody Titration: 0.2-1 ug/ml
Positive Control: Mouse Liver