

Product datasheet for **TA355869**

Esr2 Rabbit Polyclonal Antibody

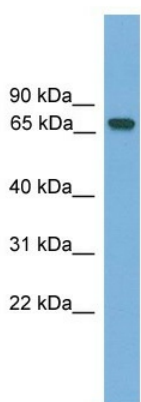
Product data:

Product Type:	Primary Antibodies
Applications:	WB
Reactivity:	Human, Mouse
Host:	Rabbit
Clonality:	Polyclonal
Immunogen:	The immunogen is a synthetic peptide corresponding to a region of Mouse
Specificity:	Expected reactivity: Mouse, Rat Homology: Mouse: 100%; Rat: 83%
Formulation:	Liquid. Purified antibody supplied in 1x PBS buffer with 0.09% (w/v) sodium azide and 2% sucrose. <i>Note that this product is shipped as lyophilized powder to China customers.</i>
Concentration:	lot specific
Purification:	Affinity Purified
Conjugation:	Unconjugated
Storage:	For short term use, store at 2-8°C up to 1 week. For long term storage, store at -20°C in small aliquots to prevent freeze-thaw cycles.
Stability:	Shelf life: one year from despatch.
Predicted Protein Size:	63kDa
Gene Name:	estrogen receptor 2 (beta)
Database Link:	NP_997590 Entrez Gene 2100 Human Entrez Gene 13983 Mouse Q8BG65
Background:	The function of this protein remains unknown.
Synonyms:	ER-BETA; Erb; ESR-BETA; ESRB; ESTRB; NR3A2

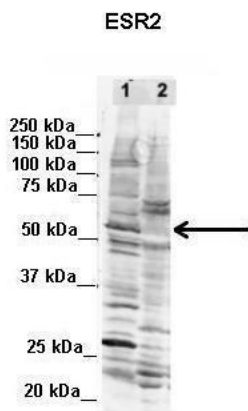


[View online »](#)

Product images:



WB Suggested Anti-Esr2 Antibody Titration: 0.2-1 ug/ml
Positive Control: Mouse Small Intestine



Lanes:
1. Human NT-2 cells (60ug) lysate 2. Mouse WT brain extract (80ug)
Primary Antibody Dilution: 2ug/ml
Secondary Antibody: IRDye 800CW goat anti-rabbit from Li-COR Bioscience
Secondary Antibody Dilution: 1: 20,000
Gene Name: Esr2
Submitted by: Dr. Yuzhi Chen, University of Arkansas for Medical Science

See Immunoblot 2 Data and Customer Feedback for more information



Host: Rabbit
Target Name: Esr2
Sample Type: Mouse Skeletal Muscle Lysate
Antibody Dilution: 1.0 μ g/ml

Host: Rabbit
Target Name: ESR2
Sample Tissue: Mouse Skeletal Muscle
Antibody Dilution: 1 μ g/ml



Host: Rabbit
Target Name: Esr2
Sample Type: Mouse Skeletal Muscle Lysate
Antibody Dilution: 1.0 μ g/ml

Host: Mouse
Target Name: ESR2
Sample Tissue: Mouse Skeletal Muscle
Antibody Dilution: 1 μ g/ml