

Product datasheet for **TA355868**

Esr2 Rabbit Polyclonal Antibody

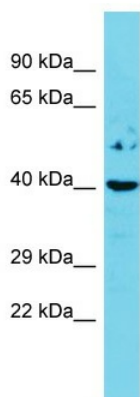
Product data:

Product Type:	Primary Antibodies
Applications:	WB
Reactivity:	Mouse
Host:	Rabbit
Clonality:	Polyclonal
Immunogen:	The immunogen is a synthetic peptide directed towards the N-terminal region of MOUSE Esr2
Specificity:	Expected reactivity: Cow, Dog, Goat, Guinea Pig, Horse, Human, Mouse, Pig, Rabbit, Rat, Sheep Homology: Cow: 93%; Dog: 100%; Goat: 93%; Guinea Pig: 86%; Horse: 92%; Human: 85%; Mouse: 100%; Pig: 93%; Rabbit: 77%; Rat: 93%; Sheep: 93%
Formulation:	Liquid. Purified antibody supplied in 1x PBS buffer with 0.09% (w/v) sodium azide and 2% sucrose. <i>Note that this product is shipped as lyophilized powder to China customers.</i>
Concentration:	lot specific
Purification:	Affinity Purified
Conjugation:	Unconjugated
Storage:	For short term use, store at 2-8°C up to 1 week. For long term storage, store at -20°C in small aliquots to prevent freeze-thaw cycles.
Stability:	Shelf life: one year from despatch.
Predicted Protein Size:	41kDa
Gene Name:	estrogen receptor 2 (beta)
Database Link:	NP_997590 Entrez Gene 13983 Mouse O08537-7
Background:	The function of this protein remains unknown.
Synonyms:	ER-BETA; Erb; ESR-BETA; ESRB; ESTRB; NR3A2

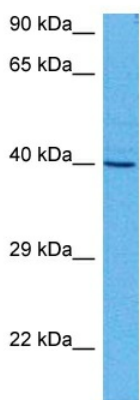


[View online »](#)

Product images:

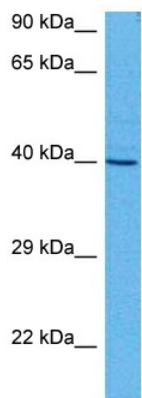


Host: Rabbit
 Target Name: Esr2
 Sample Type: Mouse Spleen lysates
 Antibody Dilution: 1.0ug/ml



Host: Rabbit
 Target Name: Esr2
 Sample Type: Mouse Heart Lysate
 Antibody Dilution: 1.0µg/ml

Host: Rabbit
 Target Name: ESR2
 Sample Tissue: Mouse Heart
 Antibody Dilution: 1 ug/ml



Host: Rabbit
Target Name: Esr2
Sample Type: Mouse Heart Lysate
Antibody Dilution: 1.0 μ g/ml

Host: Mouse
Target Name: ESR2
Sample Tissue: Mouse Heart
Antibody Dilution: 1 μ g/ml