

Product datasheet for **TA355864**

Stat1 Rabbit Polyclonal Antibody

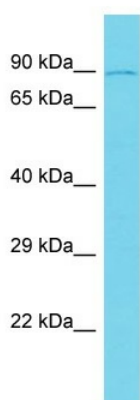
Product data:

Product Type:	Primary Antibodies
Applications:	WB
Reactivity:	Rat
Host:	Rabbit
Clonality:	Polyclonal
Immunogen:	The immunogen is a synthetic peptide directed towards the middle region of Rat Stat1
Specificity:	Expected reactivity: Dog, Guinea Pig, Horse, Human, Mouse, Rabbit, Rat Homology: Dog: 92%; Guinea Pig: 85%; Horse: 92%; Human: 85%; Mouse: 100%; Rabbit: 92%; Rat: 93%
Formulation:	Liquid. Purified antibody supplied in 1x PBS buffer with 0.09% (w/v) sodium azide and 2% sucrose. <i>Note that this product is shipped as lyophilized powder to China customers.</i>
Concentration:	lot specific
Purification:	Affinity Purified
Conjugation:	Unconjugated
Storage:	For short term use, store at 2-8°C up to 1 week. For long term storage, store at -20°C in small aliquots to prevent freeze-thaw cycles.
Stability:	Shelf life: one year from despatch.
Predicted Protein Size:	82kDa
Gene Name:	signal transducer and activator of transcription 1
Database Link:	NP_116001 Entrez Gene 25124 Rat Q9QXK0
Background:	Stat1 is a component of the IFN-gamma receptor signaling pathway and other signaling pathways; It plays a role in development of cytokine resistance.
Synonyms:	DKFZp686B04100; ISGF-3; OTTHUMP00000205845; STAT91



[View online »](#)

Product images:



Host: Rabbit
Target Name: Stat1
Sample Type: Rat Pancreas lysates
Antibody Dilution: 1.0ug/ml