

Product datasheet for **TA355863**

Cavin1 Rabbit Polyclonal Antibody

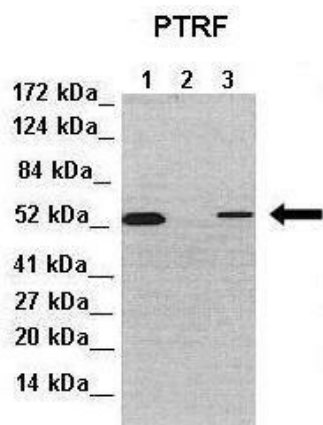
Product data:

Product Type:	Primary Antibodies
Applications:	IHC, WB
Reactivity:	Human, Mouse
Host:	Rabbit
Clonality:	Polyclonal
Immunogen:	The immunogen is a synthetic peptide directed towards the middle region of mouse PTRF
Specificity:	Expected reactivity: Mouse, Horse, Rat, Dog, Human, Bovine, Rabbit Homology: Mouse: 100%; Dog: 92%; Rat: 92%; Horse: 92%; Human: 90%; Bovine: 85%; Rabbit: 85%
Formulation:	Purified antibody supplied in 1x PBS buffer with 0.09% (w/v) sodium azide and may contain up to 2% sucrose. <i>Note that this product is shipped as lyophilized powder to China customers.</i>
Concentration:	lot specific
Purification:	Affinity Purified
Conjugation:	Unconjugated
Storage:	For short term use, store at 2-8°C up to 1 week. For long term storage, store at -20°C in small aliquots to prevent freeze-thaw cycles.
Stability:	Shelf life: one year from despatch.
Predicted Protein Size:	43kDa
Gene Name:	polymerase I and transcript release factor
Database Link:	NP_033012 Entrez Gene 284119 Human Entrez Gene 19285 Mouse O54724
Synonyms:	cavin-1; FKSG13; FLJ90031



[View online »](#)

Product images:



See Immunoblot 2 Data and Customer Feedback for more information

Lanes:

Lane 1: 50ug mouse embryonic fibroblast lysate
Lane 2: 50ug mouse PTRF-KO embryonic fibroblast lysate

Lane 3: 50ug mouse PTRF-KO embryonic fibroblast lysate+FLAG-PTRF protein

Primary Antibody Dilution:

1:1000

Secondary Antibody:

Donkey anti-Rabbit-HRP

Secondary Antibody Dilution:

1:10000

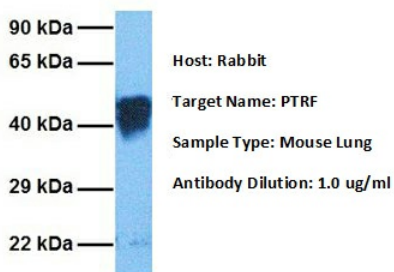
Gene Name:

PTRF

Submitted by:

Libin Liu, Boston University.

PTRF



Host: Rabbit

Target Name: PTRF

Sample Type: Mouse Lung

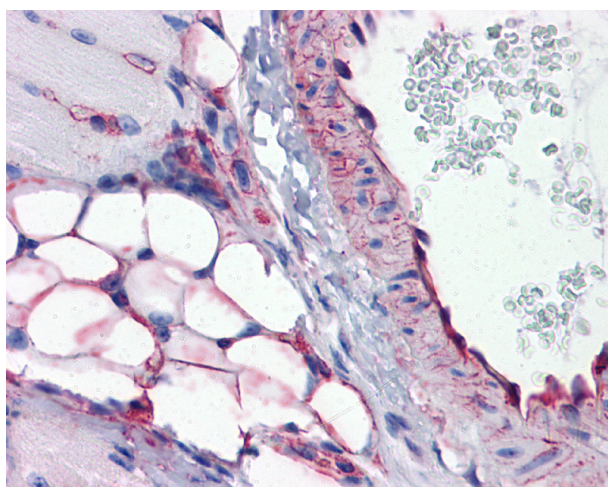
Antibody Dilution: 1.0 ug/ml

Host: Rabbit

Target Name: PTRF

Sample Tissue: Mouse Lung

Antibody Dilution: 1.0ug/ml



IHC Information: Paraffin embedded mouse vessel and adipocytes (skeletal muscle) tissue, tested with an antibody Dilution of 5 ug/ml.