

Product datasheet for **TA355860**

Pgr Rabbit Polyclonal Antibody

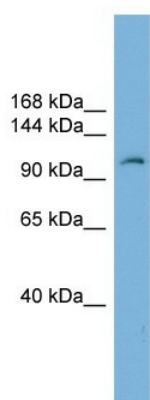
Product data:

Product Type:	Primary Antibodies
Applications:	WB
Reactivity:	Mouse
Host:	Rabbit
Clonality:	Polyclonal
Immunogen:	The immunogen is a synthetic peptide directed towards the middle region of mouse Pgr
Specificity:	Expected reactivity: Dog, Guinea Pig, Mouse, Rat Homology: Dog: 91%; Guinea Pig: 91%; Mouse: 100%; Rat: 91%
Formulation:	Liquid. Purified antibody supplied in 1x PBS buffer with 0.09% (w/v) sodium azide and 2% sucrose. <i>Note that this product is shipped as lyophilized powder to China customers.</i>
Concentration:	lot specific
Purification:	Affinity Purified
Conjugation:	Unconjugated
Storage:	For short term use, store at 2-8°C up to 1 week. For long term storage, store at -20°C in small aliquots to prevent freeze-thaw cycles.
Stability:	Shelf life: one year from despatch.
Predicted Protein Size:	99
Gene Name:	progesterone receptor
Database Link:	NP_032855 Entrez Gene 18667 Mouse A6H6A5
Background:	The function of this protein remains unknown.
Synonyms:	NR3C3; PR



[View online »](#)

Product images:



WB Suggested Anti-Pgr Antibody Titration: 0.2-1 ug/ml
Positive Control: Mouse Thymus