

Product datasheet for **TA355859**

Nab2 Rabbit Polyclonal Antibody

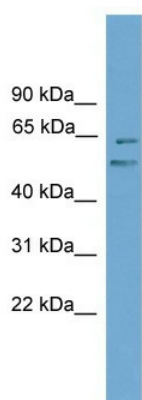
Product data:

Product Type:	Primary Antibodies
Applications:	WB
Reactivity:	Mouse
Host:	Rabbit
Clonality:	Polyclonal
Immunogen:	The immunogen is a synthetic peptide corresponding to a region of Mouse
Specificity:	Expected reactivity: Cow, Dog, Guinea Pig, Horse, Human, Mouse, Rabbit, Rat Homology: Cow: 92%; Dog: 85%; Guinea Pig: 92%; Horse: 92%; Human: 92%; Mouse: 100%; Rabbit: 92%; Rat: 92%
Formulation:	Liquid. Purified antibody supplied in 1x PBS buffer with 0.09% (w/v) sodium azide and 2% sucrose. <i>Note that this product is shipped as lyophilized powder to China customers.</i>
Concentration:	lot specific
Purification:	Affinity Purified
Conjugation:	Unconjugated
Storage:	For short term use, store at 2-8°C up to 1 week. For long term storage, store at -20°C in small aliquots to prevent freeze-thaw cycles.
Stability:	Shelf life: one year from despatch.
Predicted Protein Size:	57kDa
Gene Name:	Ngfi-A binding protein 2
Database Link:	NP_032694 Entrez Gene 17937 Mouse Q61127
Background:	Nab2 acts as a transcriptional repressor for zinc finger transcription factors EGR1 and EGR2. Isoform 2 lacks repression ability.
Synonyms:	MADER; MGC75085



[View online »](#)

Product images:



WB Suggested Anti-Nab2 Antibody Titration: 0.2-1 ug/ml
Positive Control: SP2/O cell lysate