

Product datasheet for **TA355857**

Hsf1 Rabbit Polyclonal Antibody

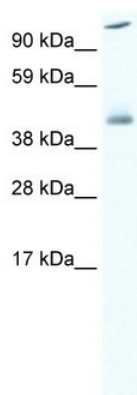
Product data:

Product Type:	Primary Antibodies
Applications:	WB
Reactivity:	Mouse
Host:	Rabbit
Clonality:	Polyclonal
Immunogen:	The immunogen is a synthetic peptide directed towards the C terminal region of mouse HSF1
Specificity:	Expected reactivity: Cow, Dog, Goat, Guinea Pig, Horse, Human, Mouse, Pig, Rabbit, Rat Homology: Cow: 86%; Dog: 86%; Goat: 86%; Guinea Pig: 79%; Horse: 86%; Human: 86%; Mouse: 100%; Pig: 86%; Rabbit: 86%; Rat: 100%
Formulation:	Liquid. Purified antibody supplied in 1x PBS buffer with 0.09% (w/v) sodium azide and 2% sucrose. <i>Note that this product is shipped as lyophilized powder to China customers.</i>
Concentration:	lot specific
Purification:	Affinity Purified
Conjugation:	Unconjugated
Storage:	For short term use, store at 2-8°C up to 1 week. For long term storage, store at -20°C in small aliquots to prevent freeze-thaw cycles.
Stability:	Shelf life: one year from despatch.
Predicted Protein Size:	55kDa
Gene Name:	heat shock factor 1
Database Link:	NP_032322 Entrez Gene 15499 Mouse P38532-2
Background:	HSF1 mediates the stress induced expression of heat shock proteins.
Synonyms:	HSTF1



[View online »](#)

Product images:



WB Suggested Anti-HSF1 Antibody Titration:
0.06125ug/ml
ELISA Titer: 1:62500
Positive Control: SP2/O cell lysate