

Product datasheet for **TA355856**

Hsf1 Rabbit Polyclonal Antibody

Product data:

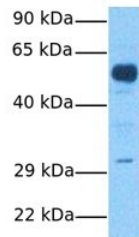
Product Type:	Primary Antibodies
Applications:	WB
Reactivity:	Human, Mouse
Host:	Rabbit
Clonality:	Polyclonal
Immunogen:	The immunogen is a synthetic peptide directed towards the C terminal region of mouse HSF1
Specificity:	Expected reactivity: Cow, Dog, Goat, Guinea Pig, Horse, Human, Mouse, Rabbit, Rat Homology: Cow: 93%; Dog: 93%; Goat: 92%; Guinea Pig: 93%; Horse: 92%; Human: 91%; Mouse: 100%; Rabbit: 92%; Rat: 100%
Formulation:	Liquid. Purified antibody supplied in 1x PBS buffer with 0.09% (w/v) sodium azide and 2% sucrose. <i>Note that this product is shipped as lyophilized powder to China customers.</i>
Concentration:	lot specific
Purification:	Protein A purified
Conjugation:	Unconjugated
Storage:	For short term use, store at 2-8°C up to 1 week. For long term storage, store at -20°C in small aliquots to prevent freeze-thaw cycles.
Stability:	Shelf life: one year from despatch.
Predicted Protein Size:	55kDa
Gene Name:	heat shock factor 1
Database Link:	NP_032322 Entrez Gene 3297 Human Entrez Gene 15499 Mouse P38532-2
Background:	HSF1 mediates the stress induced expression of heat shock proteins.
Synonyms:	HSTF1



[View online »](#)

Product images:

HSF1



Host: Rabbit

Target Name: HSF1

Sample Type: Human Fetal Brain

Antibody Dilution: 1ug/ml

Host: Rabbit

Target Name: HSF1

Sample Tissue: Human Fetal Brain

Antibody Dilution: 1.0ug/ml