

Product datasheet for **TA355854**

KCTD19 Rabbit Polyclonal Antibody

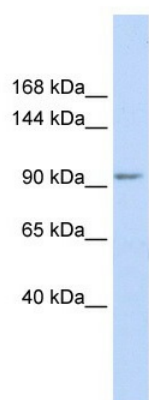
Product data:

Product Type:	Primary Antibodies
Applications:	WB
Reactivity:	Human
Host:	Rabbit
Clonality:	Polyclonal
Immunogen:	The immunogen is a synthetic peptide directed towards the n terminal region of human KCTD19
Specificity:	Expected reactivity: Cow, Horse, Human, Mouse, Pig, Rabbit, Rat Homology: Cow: 90%; Horse: 100%; Human: 100%; Mouse: 90%; Pig: 100%; Rabbit: 100%; Rat: 100%
Formulation:	Liquid. Purified antibody supplied in 1x PBS buffer with 0.09% (w/v) sodium azide and 2% sucrose.
Concentration:	lot specific
Purification:	Affinity Purified
Conjugation:	Unconjugated
Storage:	For short term use, store at 2-8°C up to 1 week. For long term storage, store at -20°C in small aliquots to prevent freeze-thaw cycles.
Stability:	Shelf life: one year from despatch.
Predicted Protein Size:	102kDa
Gene Name:	potassium channel tetramerization domain containing 19
Database Link:	XP_085367 Entrez Gene 146212 Human Q17RG1
Background:	The exact function of this protein remains unknown.
Synonyms:	FLJ40162



[View online »](#)

Product images:



WB Suggested Anti-KCTD19 Antibody Titration:
0.2-1 ug/ml
ELISA Titer: 1:12500
Positive Control: Human Muscle