

## Product datasheet for **TA355853**

### **Kv4.3 (KCND3) Rabbit Polyclonal Antibody**

#### **Product data:**

Product Type:	Primary Antibodies
Applications:	WB
Reactivity:	Human, Mouse
Host:	Rabbit
Clonality:	Polyclonal
Immunogen:	The immunogen is a synthetic peptide directed towards the N terminal region of human KCND3
Specificity:	<b>Expected reactivity:</b> Human <b>Homology:</b> Cow: 100%; Dog: 100%; Guinea Pig: 100%; Horse: 100%; Human: 100%; Mouse: 100%; Rabbit: 100%; Rat: 100%
Formulation:	Liquid. Purified antibody supplied in 1x PBS buffer with 0.09% (w/v) sodium azide and 2% sucrose. <i>Note that this product is shipped as lyophilized powder to China customers.</i>
Concentration:	lot specific
Purification:	Affinity purified
Conjugation:	Unconjugated
Storage:	For short term use, store at 2-8°C up to 1 week. For long term storage, store at -20°C in small aliquots to prevent freeze-thaw cycles.
Stability:	Shelf life: one year from despatch.
Predicted Protein Size:	72 kDa
Gene Name:	potassium voltage-gated channel subfamily D member 3
Database Link:	<a href="#">NP_004971.2</a> <a href="#">Entrez Gene 56543 Mouse</a> <a href="#">Entrez Gene 3752 Human</a> <a href="#">Q9UK17</a>



[View online »](#)

**Background:**

Voltage-gated potassium (Kv) channels represent the most complex class of voltage-gated ion channels from both functional and structural standpoints. Their diverse functions include regulating neurotransmitter release, heart rate, insulin secretion, neuronal excitability, epithelial electrolyte transport, smooth muscle contraction, and cell volume. Four sequence-related potassium channel genes - shaker, shaw, shab, and shal - have been identified in *Drosophila*, and each has been shown to have human homolog(s). This gene encodes a member of the potassium channel, voltage-gated, shal-related subfamily, members of which form voltage-activated A-type potassium ion channels and are prominent in the repolarization phase of the action potential. This member includes two isoforms with different sizes, which are encoded by alternatively spliced transcript variants of this gene.

**Synonyms:**

KCND3L; KCND3S; KSHIVB; KV4.3; MGC142035; MGC142037; OTTHUMP00000013772

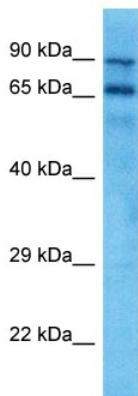
**Protein Families:**

Druggable Genome, Ion Channels: Potassium, Transmembrane

**Product images:**


Host: Rabbit  
 Target Name: KCND3  
 Sample Type: Liver Tumor Lysate  
 Antibody Dilution: 1.0µg/ml

Host: Rabbit  
 Target Name: KCND3  
 Sample Tissue: Liver Tumor lysates  
 Antibody Dilution: 1ug/ml



Host: Rabbit  
 Target Name: Kcnd3  
 Sample Type: Mouse Spleen Lysate  
 Antibody Dilution: 1.0µg/ml

Host: Mouse  
 Target Name: KCND3  
 Sample Tissue: Mouse Spleen  
 Antibody Dilution: 1ug/ml