

Product datasheet for **TA355851**

STEAP1B Rabbit Polyclonal Antibody

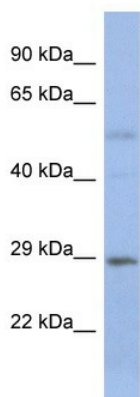
Product data:

Product Type:	Primary Antibodies
Applications:	WB
Reactivity:	Human
Host:	Rabbit
Clonality:	Polyclonal
Immunogen:	The immunogen is a synthetic peptide directed towards the N-terminal region of human STEAP1B
Specificity:	Expected reactivity: Cow, Dog, Guinea Pig, Horse, Human, Mouse, Rabbit, Rat Homology: Cow: 86%; Dog: 86%; Guinea Pig: 86%; Horse: 86%; Human: 100%; Mouse: 77%; Rabbit: 93%; Rat: 93%
Formulation:	Liquid. Purified antibody supplied in 1x PBS buffer with 0.09% (w/v) sodium azide and 2% sucrose. <i>Note that this product is shipped as lyophilized powder to China customers.</i>
Concentration:	lot specific
Purification:	Affinity Purified
Conjugation:	Unconjugated
Storage:	For short term use, store at 2-8°C up to 1 week. For long term storage, store at -20°C in small aliquots to prevent freeze-thaw cycles.
Stability:	Shelf life: one year from despatch.
Predicted Protein Size:	27kDa
Gene Name:	STEAP family member 1B
Database Link:	NP_001157932.1 Entrez Gene 256227 Human Q6NZ63
Synonyms:	MGC87042
Protein Families:	Transmembrane

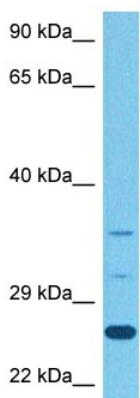


[View online »](#)

Product images:



Host: Rabbit
 Target Name: STEAP1B
 Sample Type: Fetal Small Intestine lysates
 Antibody Dilution: 1.0ug/ml



Host: Rabbit
 Target Name: STEAP1
 Sample Type: Stomach Tumor Lysate
 Antibody Dilution: 1.0µg/ml

Host: Rabbit
 Target Name: STEAP1
 Sample Tissue: Human Stomach Tumor
 Antibody Dilution: 1 ug/ml