

Product datasheet for **TA355844**

Gja10 Rabbit Polyclonal Antibody

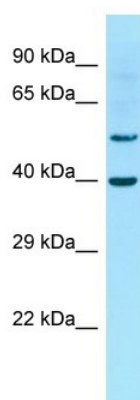
Product data:

Product Type:	Primary Antibodies
Applications:	WB
Reactivity:	Rat
Host:	Rabbit
Clonality:	Polyclonal
Immunogen:	The immunogen is a synthetic peptide directed towards the middle region of Rat Gja10
Specificity:	Expected reactivity: Horse, Human, Mouse, Pig, Rabbit, Rat Homology: Horse: 86%; Human: 100%; Mouse: 93%; Pig: 91%; Rabbit: 86%; Rat: 86%
Formulation:	Liquid. Purified antibody supplied in 1x PBS buffer with 0.09% (w/v) sodium azide and 2% sucrose. <i>Note that this product is shipped as lyophilized powder to China customers.</i>
Concentration:	lot specific
Purification:	Affinity Purified
Conjugation:	Unconjugated
Storage:	For short term use, store at 2-8°C up to 1 week. For long term storage, store at -20°C in small aliquots to prevent freeze-thaw cycles.
Stability:	Shelf life: one year from despatch.
Predicted Protein Size:	55kDa
Gene Name:	gap junction protein, alpha 10
Database Link:	NP_001166979 Entrez Gene 313126 Rat
Background:	One gap junction consists of a cluster of closely packed pairs of transmembrane channels, the connexons, through which materials of low MW diffuse from one cell to a neighboring cell.
Synonyms:	Connexin-62; CX62; RP11-63K6.6



[View online »](#)

Product images:



Host: Rabbit
Target Name: Gja10
Sample Type: Rat Thymus lysates
Antibody Dilution: 1.0ug/ml