

Product datasheet for **TA355827**

RECQL5 Rabbit Polyclonal Antibody

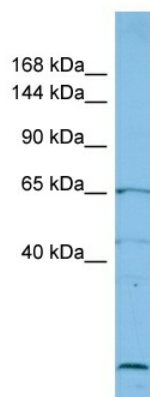
Product data:

Product Type:	Primary Antibodies
Applications:	WB
Reactivity:	Human
Host:	Rabbit
Clonality:	Polyclonal
Immunogen:	The immunogen is a synthetic peptide directed towards the C-terminal region of Human PP1045
Specificity:	Expected reactivity: Dog, Guinea Pig, Horse, Human, Mouse, Rat Homology: Dog: 76%; Guinea Pig: 92%; Horse: 80%; Human: 100%; Mouse: 79%; Rat: 92%
Formulation:	Liquid. Purified antibody supplied in 1x PBS buffer with 0.09% (w/v) sodium azide and 2% sucrose. <i>Note that this product is shipped as lyophilized powder to China customers.</i>
Concentration:	lot specific
Purification:	Affinity Purified
Conjugation:	Unconjugated
Storage:	For short term use, store at 2-8°C up to 1 week. For long term storage, store at -20°C in small aliquots to prevent freeze-thaw cycles.
Stability:	Shelf life: one year from despatch.
Predicted Protein Size:	64kDa
Gene Name:	RecQ like helicase 5
Database Link:	Entrez Gene 9400 Human Q8WYH5
Background:	The protein encoded by this gene is a helicase that is important for genome stability. The encoded protein also prevents aberrant homologous recombination by displacing RAD51 from ssDNA. Three transcript variants encoding different isoforms have been found for this gene.
Synonyms:	FLJ90603; RECQ5



[View online »](#)

Product images:



Host: Rabbit
Target Name: PP1045
Sample Tissue: ACHN Cell Lysate
Antibody Dilution: 1.0 μ g/ml

Host: Rabbit
Target Name: [PP1045]
Sample Type: ACHN Whole Cell lysates
Antibody Dilution: 1.0 μ g/ml