

Product datasheet for **TA355825**

Zinc finger protein 251 (ZNF251) Rabbit Polyclonal Antibody

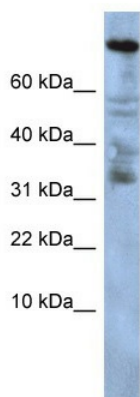
Product data:

Product Type:	Primary Antibodies
Applications:	WB
Reactivity:	Human
Host:	Rabbit
Clonality:	Polyclonal
Immunogen:	The immunogen is a synthetic peptide directed towards the middle region of human ZNF251
Specificity:	Expected reactivity: Cow, Guinea Pig, Horse, Human, Mouse, Rabbit, Rat, Zebrafish Homology: Cow: 85%; Guinea Pig: 93%; Horse: 91%; Human: 100%; Mouse: 93%; Rabbit: 86%; Rat: 93%; Zebrafish: 83%
Formulation:	Liquid. Purified antibody supplied in 1x PBS buffer with 0.09% (w/v) sodium azide and 2% sucrose.
Concentration:	lot specific
Purification:	Affinity Purified
Conjugation:	Unconjugated
Storage:	For short term use, store at 2-8°C up to 1 week. For long term storage, store at -20°C in small aliquots to prevent freeze-thaw cycles.
Stability:	Shelf life: one year from despatch.
Predicted Protein Size:	74kDa
Gene Name:	zinc finger protein 251
Database Link:	XP_291262 Entrez Gene 90987 Human Q9BRH9
Background:	ZNF251 may be involved in transcriptional regulation.
Synonyms:	FLJ34319



[View online »](#)

Product images:



WB Suggested Anti-ZNF251 Antibody Titration:
0.2-1 ug/ml
ELISA Titer: 1:1562500
Positive Control: HepG2 cell lysate