

Product datasheet for **TA355807**

EBF2 Rabbit Polyclonal Antibody

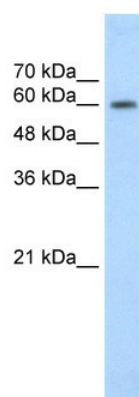
Product data:

Product Type:	Primary Antibodies
Applications:	WB
Reactivity:	Human
Host:	Rabbit
Clonality:	Polyclonal
Immunogen:	The immunogen is a synthetic peptide directed towards the C terminal region of human EBF2
Specificity:	Expected reactivity: Cow, Dog, Guinea Pig, Horse, Human, Mouse, Rabbit, Rat Homology: Cow: 100%; Dog: 93%; Guinea Pig: 100%; Horse: 100%; Human: 100%; Mouse: 100%; Rabbit: 100%; Rat: 100%
Formulation:	Liquid. Purified antibody supplied in 1x PBS buffer with 0.09% (w/v) sodium azide and 2% sucrose. <i>Note that this product is shipped as lyophilized powder to China customers.</i>
Concentration:	lot specific
Purification:	Protein A purified
Conjugation:	Unconjugated
Storage:	For short term use, store at 2-8°C up to 1 week. For long term storage, store at -20°C in small aliquots to prevent freeze-thaw cycles.
Stability:	Shelf life: one year from despatch.
Predicted Protein Size:	61kDa
Gene Name:	early B-cell factor 2
Database Link:	XP_944784 Entrez Gene 64641 Human Q9HAK2
Background:	EBF2 belongs to the conserved Olf/EBF family of helix-loop-helix transcription factors
Synonyms:	COE2; EBF-2; FLJ11500; O/E-3; OE-3



[View online »](#)

Product images:



WB Suggested Anti-EBF2 Antibody Titration:
1.25ug/ml
Positive Control: HepG2 cell lysate