

## Product datasheet for **TA355804**

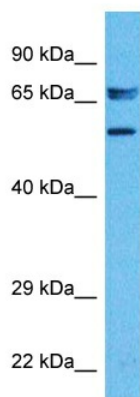
### ZNF358 Rabbit Polyclonal Antibody

#### Product data:

Product Type:	Primary Antibodies
Applications:	WB
Reactivity:	Human
Host:	Rabbit
Clonality:	Polyclonal
Immunogen:	The immunogen is a synthetic peptide directed towards the C-terminal region of Human ZN358
Specificity:	<b>Expected reactivity:</b> Human <b>Homology:</b> Human: 100%
Formulation:	Liquid. Purified antibody supplied in 1x PBS buffer with 0.09% (w/v) sodium azide and 2% sucrose.
Concentration:	lot specific
Purification:	Affinity purified
Conjugation:	Unconjugated
Storage:	For short term use, store at 2-8°C up to 1 week. For long term storage, store at -20°C in small aliquots to prevent freeze-thaw cycles.
Stability:	Shelf life: one year from despatch.
Predicted Protein Size:	62kDa
Gene Name:	zinc finger protein 358
Database Link:	<a href="#">XP_005272517</a> <a href="#">Entrez Gene 140467 Human</a> <a href="#">Q9NW07</a>
Synonyms:	FLJ10390; OTTHUMP00000196562; ZFEND



[View online »](#)

**Product images:**


Host: Rabbit  
 Target Name: ZN358  
 Sample Tissue: 293T Cell Lysate  
 Antibody Dilution: 1.0µg/ml

Host: Rabbit  
 Target Name: ZN358  
 Sample Type: 293T Whole Cell lysates  
 Antibody Dilution: 1.0ug/ml