

Product datasheet for **TA355798**

ZP3 Rabbit Polyclonal Antibody

Product data:

Product Type:	Primary Antibodies
Applications:	WB
Reactivity:	Human
Host:	Rabbit
Clonality:	Polyclonal
Immunogen:	The immunogen is a synthetic peptide directed towards the C terminal region of human ZP3
Specificity:	Expected reactivity: Cow, Horse, Human, Rabbit, Rat Homology: Cow: 100%; Horse: 100%; Human: 100%; Rabbit: 100%; Rat: 90%
Formulation:	Liquid. Purified antibody supplied in 1x PBS buffer with 0.09% (w/v) sodium azide and 2% sucrose.
Concentration:	lot specific
Purification:	Protein A purified
Conjugation:	Unconjugated
Storage:	For short term use, store at 2-8°C up to 1 week. For long term storage, store at -20°C in small aliquots to prevent freeze-thaw cycles.
Stability:	Shelf life: one year from despatch.
Predicted Protein Size:	47kDa
Gene Name:	zona pellucida glycoprotein 3 (sperm receptor)
Database Link:	Entrez Gene 7784 Human P21754-2



[View online »](#)

Background:

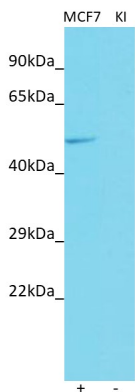
The zona pellucida is an extracellular matrix that surrounds the oocyte and early embryo. It is composed primarily of three or four glycoproteins with various functions during fertilization and preimplantation development. The protein encoded by this gene is a structural component of the zona pellucida and functions in primary binding and induction of the sperm acrosome reaction. The nascent protein contains a N-terminal signal peptide sequence, a conserved ZP domain, a C-terminal consensus furin cleavage site, and a transmembrane domain. It is hypothesized that furin cleavage results in release of the mature protein from the plasma membrane for subsequent incorporation into the zona pellucida matrix. However, the requirement for furin cleavage in this process remains controversial based on mouse studies. A variation in the last exon of this gene has previously served as the basis for an additional ZP3 locus; however, sequence and literature review reveals that there is only one full-length ZP3 locus in the human genome. Another locus encoding a bipartite transcript designated POMZP3 contains a duplication of the last four exons of ZP3, including the above described variation, and maps closely to this gene

Synonyms:

ZP3-372; ZP3-424; ZP3A; ZP3A/ZP3B; ZP3B; ZPC

Product images:

WB Suggested Anti-ZP3 Antibody Titration:
0.6ug/ml
ELISA Titer: 1:62500
Positive Control: HepG2 cell lysate



Host: Rabbit
 Target name: ZP3
 Positive control: ~25ug MCF7 Cell Lysate (MCF7)
 Negative control: ~25ug Human Kidney (KI)
 Antibody concentration: 5ug/ml

Host: Rabbit
 Target: ZP3
 Positive control (+): MCF7 Cell Lysate (N10)
 Negative control (-): Human Kidney (KI)
 Antibody concentration: 5ug/ml