

Product datasheet for **TA355781**

Acid sphingomyelinase (SMPD1) Rabbit Polyclonal Antibody

Product data:

Product Type:	Primary Antibodies
Applications:	WB
Reactivity:	Human
Host:	Rabbit
Clonality:	Polyclonal
Immunogen:	The immunogen is a synthetic peptide directed towards the middle region of human SMPD1
Specificity:	Expected reactivity: Cow, Dog, Guinea Pig, Horse, Human, Mouse, Rabbit, Rat, Sheep Homology: Cow: 83%; Dog: 87%; Guinea Pig: 87%; Horse: 80%; Human: 100%; Mouse: 80%; Rabbit: 87%; Rat: 87%; Sheep: 83%
Formulation:	Liquid. Purified antibody supplied in 1x PBS buffer with 0.09% (w/v) sodium azide and 2% sucrose. <i>Note that this product is shipped as lyophilized powder to China customers.</i>
Concentration:	lot specific
Purification:	Affinity Purified
Conjugation:	Unconjugated
Storage:	For short term use, store at 2-8°C up to 1 week. For long term storage, store at -20°C in small aliquots to prevent freeze-thaw cycles.
Stability:	Shelf life: one year from despatch.
Predicted Protein Size:	18kDa
Gene Name:	sphingomyelin phosphodiesterase 1
Database Link:	NP_000534.3 Entrez Gene 6609 Human P17405
Background:	The protein encoded by this gene is a lysosomal acid sphingomyelinase that converts sphingomyelin to ceramide. The encoded protein also has phospholipase C activity. Defects in this gene are a cause of Niemann-Pick disease type A (NPA) and Niemann-Pick disease type B (NPB). Multiple transcript variants encoding different isoforms have been identified.
Synonyms:	ASM; aSMase; NPD

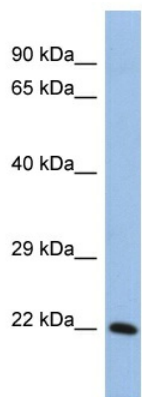


[View online »](#)

Protein Families: Druggable Genome, Transmembrane

Protein Pathways: Lysosome, Metabolic pathways, Sphingolipid metabolism

Product images:



Host: Rabbit
Target Name: SMPD1
Sample Tissue: THP-1 Cell Lysate
Antibody Dilution: 1.0 μ g/ml

Host: Rabbit
Target Name: SMPD1
Sample Tissue: Human THP-1 Whole Cell
Antibody Dilution: 1 μ g/ml