

## Product datasheet for **TA355777**

### TPTE Rabbit Polyclonal Antibody

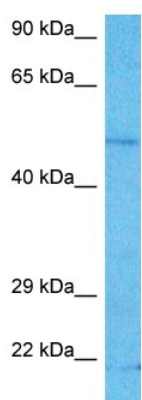
#### Product data:

Product Type:	Primary Antibodies
Applications:	WB
Reactivity:	Human
Host:	Rabbit
Clonality:	Polyclonal
Immunogen:	The immunogen is a synthetic peptide directed towards the middle region of Human TPTE
Specificity:	<b>Expected reactivity:</b> Human <b>Homology:</b> Human: 100%
Formulation:	Liquid. Purified antibody supplied in 1x PBS buffer with 0.09% (w/v) sodium azide and 2% sucrose. <i>Note that this product is shipped as lyophilized powder to China customers.</i>
Concentration:	lot specific
Purification:	Affinity purified
Conjugation:	Unconjugated
Storage:	For short term use, store at 2-8°C up to 1 week. For long term storage, store at -20°C in small aliquots to prevent freeze-thaw cycles.
Stability:	Shelf life: one year from despatch.
Predicted Protein Size:	56kDa
Gene Name:	transmembrane phosphatase with tensin homology
Database Link:	<a href="#">Entrez Gene 7179 Human P56180-3</a>
Background:	This gene encodes a PTEN-related tyrosine phosphatase which may play a role in the signal transduction pathways of the endocrine or spermatogenic function of the testis. Alternative splicing results in multiple transcript variants.
Synonyms:	CT44; PTEN2



[View online »](#)

## Product images:



Host: Rabbit  
Target Name: TPTE  
Sample Tissue: Jurkat Cell Lysate  
Antibody Dilution: 1.0 µg/ml

Host: Rabbit  
Target Name: TPTE  
Sample Type: Jurkat Whole Cell lysates  
Antibody Dilution: 1.0ug/ml