

## Product datasheet for **TA355771**

### **Kv beta 2 (KCNAB2) Rabbit Polyclonal Antibody**

#### **Product data:**

Product Type:	Primary Antibodies
Applications:	WB
Reactivity:	Human
Host:	Rabbit
Clonality:	Polyclonal
Immunogen:	The immunogen is a synthetic peptide directed towards the middle region of Human KCNAB2
Specificity:	<b>Expected reactivity:</b> Cow, Dog, Guinea Pig, Horse, Human, Mouse, Rabbit, Rat, Yeast, Zebrafish <b>Homology:</b> Cow: 100%; Dog: 100%; Guinea Pig: 100%; Horse: 100%; Human: 100%; Mouse: 100%; Rabbit: 100%; Rat: 100%; Yeast: 91%; Zebrafish: 100%
Formulation:	Liquid. Purified antibody supplied in 1x PBS buffer with 0.09% (w/v) sodium azide and 2% sucrose. <i>Note that this product is shipped as lyophilized powder to China customers.</i>
Concentration:	lot specific
Purification:	Affinity Purified
Conjugation:	Unconjugated
Storage:	For short term use, store at 2-8°C up to 1 week. For long term storage, store at -20°C in small aliquots to prevent freeze-thaw cycles.
Stability:	Shelf life: one year from despatch.
Predicted Protein Size:	33kDa
Gene Name:	potassium voltage-gated channel subfamily A regulatory beta subunit 2
Database Link:	<a href="#">Entrez Gene 8514 Human Q13303-4</a>
Background:	This gene encodes a member of the potassium channel, voltage-gated, shaker-related subfamily. This member is one of the beta subunits, which are auxiliary proteins associating with functional Kv-alpha subunits. This member alters functional properties of the KCNA4 gene product.

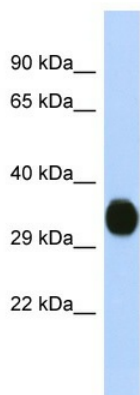


[View online »](#)

## Synonyms:

AKR6A5; HKvbeta2; HKvbeta2.1; HKvbeta2.2; KCNA2B; KCNK2; KV-BETA-2; MGC117289; OTTHUMP00000000874; OTTHUMP00000000875; OTTHUMP00000000877

## Product images:



Host: Rabbit  
Target Name: KCNAB2  
Sample Type: Fetal Brain lysates  
Antibody Dilution: 1.0ug/ml