

Product datasheet for **TA355764**

TRPM8 Rabbit Polyclonal Antibody

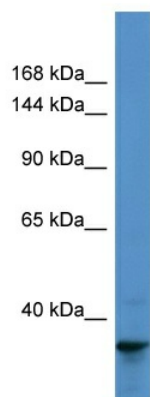
Product data:

Product Type:	Primary Antibodies
Applications:	WB
Reactivity:	Human
Host:	Rabbit
Clonality:	Polyclonal
Immunogen:	The immunogen is a synthetic peptide directed towards the N-terminal region of human TRPM8
Specificity:	Expected reactivity: Cow, Dog, Guinea Pig, Horse, Human, Mouse, Pig, Rabbit, Rat Homology: Cow: 100%; Dog: 93%; Guinea Pig: 92%; Horse: 100%; Human: 100%; Mouse: 92%; Pig: 100%; Rabbit: 85%; Rat: 92%
Formulation:	Liquid. Purified antibody supplied in 1x PBS buffer with 0.09% (w/v) sodium azide and 2% sucrose. <i>Note that this product is shipped as lyophilized powder to China customers.</i>
Concentration:	lot specific
Purification:	Affinity Purified
Conjugation:	Unconjugated
Storage:	For short term use, store at 2-8°C up to 1 week. For long term storage, store at -20°C in small aliquots to prevent freeze-thaw cycles.
Stability:	Shelf life: one year from despatch.
Predicted Protein Size:	35kDa
Gene Name:	transient receptor potential cation channel subfamily M member 8
Database Link:	NP_076985.4 Entrez Gene 79054 Human Q7Z2W7
Synonyms:	LTRPC6; MGC2849; Trp-p8; TRPP8
Protein Families:	Druggable Genome, Ion Channels: Transient receptor potential, Transmembrane



[View online »](#)

Product images:



Host: Rabbit
Target Name: TRPM8
Sample Tissue: 293T Cell Lysate
Antibody Dilution: 1.0 μ g/ml

Host: Rabbit
Target Name: TRPM8
Sample Type: 293T Whole Cell lysates
Antibody Dilution: 1.0ug/ml