

Product datasheet for **TA355761**

CHRNA10 Rabbit Polyclonal Antibody

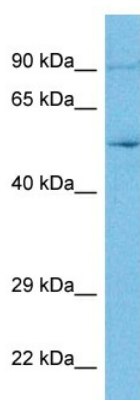
Product data:

Product Type:	Primary Antibodies
Applications:	WB
Reactivity:	Human
Host:	Rabbit
Clonality:	Polyclonal
Immunogen:	The immunogen for Anti-CHRNA10 antibody is: synthetic peptide directed towards the N-terminal region of Human ACH10
Specificity:	Expected reactivity: Cow, Guinea Pig, Horse, Human, Mouse, Rat Homology: Cow: 93%; Guinea Pig: 93%; Horse: 93%; Human: 100%; Mouse: 93%; Rat: 93%
Formulation:	Liquid. Purified antibody supplied in 1x PBS buffer with 0.09% (w/v) sodium azide and 2% sucrose. <i>Note that this product is shipped as lyophilized powder to China customers.</i>
Concentration:	lot specific
Purification:	Affinity purified
Conjugation:	Unconjugated
Storage:	For short term use, store at 2-8°C up to 1 week. For long term storage, store at -20°C in small aliquots to prevent freeze-thaw cycles.
Stability:	Shelf life: one year from despatch.
Predicted Protein Size:	49 kDa
Gene Name:	cholinergic receptor nicotinic alpha 10 subunit
Database Link:	NP_065135.2 Entrez Gene 57053 Human Q9GZZ6
Synonyms:	NACHRA10



[View online »](#)

Product images:



Host: Rabbit
Target Name: ACH10
Sample Tissue: MCF7 Cell Lysate
Antibody Dilution: 1.0 μ g/ml

WB Suggested Anti-ACH10 antibody Titration: 1
ug/mL
Sample Type: Human MCF7 Whole Cell