

Product datasheet for **TA355759**

CHRNA9 Rabbit Polyclonal Antibody

Product data:

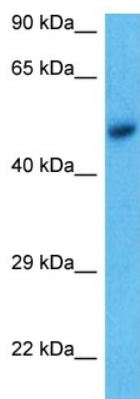
Product Type:	Primary Antibodies
Applications:	WB
Reactivity:	Human
Host:	Rabbit
Clonality:	Polyclonal
Immunogen:	The immunogen for Anti-CHRNA9 antibody is: synthetic peptide directed towards the N-terminal region of Human ACHA9
Specificity:	Expected reactivity: Cow, Dog, Horse, Human, Mouse, Pig, Rabbit, Rat Homology: Cow: 86%; Dog: 93%; Horse: 93%; Human: 100%; Mouse: 86%; Pig: 86%; Rabbit: 93%; Rat: 86%
Formulation:	Liquid. Purified antibody supplied in 1x PBS buffer with 0.09% (w/v) sodium azide and 2% sucrose. <i>Note that this product is shipped as lyophilized powder to China customers.</i>
Concentration:	lot specific
Purification:	Affinity purified
Conjugation:	Unconjugated
Storage:	For short term use, store at 2-8°C up to 1 week. For long term storage, store at -20°C in small aliquots to prevent freeze-thaw cycles.
Stability:	Shelf life: one year from despatch.
Predicted Protein Size:	52 kDa
Gene Name:	cholinergic receptor nicotinic alpha 9 subunit
Database Link:	NP_060051.2 Entrez Gene 55584 Human Q9UGM1
Background:	This gene is a member of the ligand-gated ionic channel family and nicotinic acetylcholine receptor gene superfamily. It encodes a plasma membrane protein that forms homo- or hetero-oligomeric divalent cation channels. This protein is involved in cochlea hair cell development and is also expressed in the outer hair cells (OHCs) of the adult cochlea.



[View online »](#)

Synonyms: HSA243342; MGC142109; MGC142135; NACHRA9

Product images:



Host: Rabbit
Target Name: ACHA9
Sample Tissue: MCF7 Cell Lysate
Antibody Dilution: 1.0 μ g/ml

WB Suggested Anti-ACHA9 antibody Titration: 1
ug/mL
Sample Type: Human MCF7 Whole Cell