

Product datasheet for **TA355757**

CLIC5 Rabbit Polyclonal Antibody

Product data:

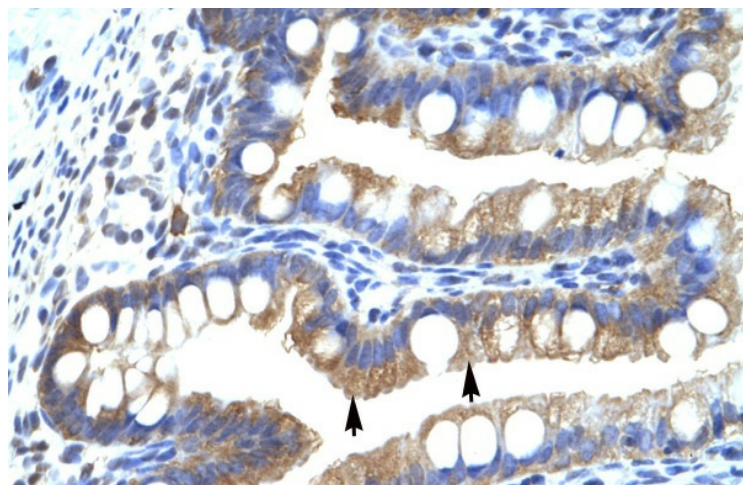
| | |
|-------------------------|--|
| Product Type: | Primary Antibodies |
| Applications: | IHC, WB |
| Reactivity: | Human |
| Host: | Rabbit |
| Clonality: | Polyclonal |
| Immunogen: | The immunogen is a synthetic peptide directed towards the middle region of human CLIC5 |
| Specificity: | Expected reactivity: Cow, Dog, Guinea Pig, Horse, Human, Mouse, Pig, Rabbit, Rat, Zebrafish Homology: Cow: 93%; Dog: 86%; Guinea Pig: 86%; Horse: 100%; Human: 100%; Mouse: 100%; Pig: 93%; Rabbit: 100%; Rat: 100%; Zebrafish: 79% |
| Formulation: | Liquid. Purified antibody supplied in 1x PBS buffer with 0.09% (w/v) sodium azide and 2% sucrose. <i>Note that this product is shipped as lyophilized powder to China customers.</i> |
| Concentration: | lot specific |
| Purification: | Protein A purified |
| Conjugation: | Unconjugated |
| Storage: | For short term use, store at 2-8°C up to 1 week. For long term storage, store at -20°C in small aliquots to prevent freeze-thaw cycles. |
| Stability: | Shelf life: one year from despatch. |
| Predicted Protein Size: | 46kDa |
| Gene Name: | chloride intracellular channel 5 |
| Database Link: | Entrez Gene 53405 Human Q9NZA1 |
| Background: | CLIon Channel5 specifically associates with the cytoskeleton of placenta microvilli. CLIon Channel-5A has a role as a chloride channel in vitro and binds to cortical actin cytoskeleton. |
| Synonyms: | CLIC5B; dj447E21.4; FLJ90663; MST130; MSTP130 |



[View online »](#)

Product images:

WB Suggested Anti-CLIC5 Antibody Titration:
1.25ug/ml
ELISA Titer: 1:62500
Positive Control: Jurkat cell lysate
There is BioGPS gene expression data showing that CLIC5 is expressed in Jurkat



Human Intestine