

Product datasheet for **TA355754**

MLC1 Rabbit Polyclonal Antibody

Product data:

Product Type:	Primary Antibodies
Applications:	IHC, WB
Reactivity:	Human, Rat
Host:	Rabbit
Clonality:	Polyclonal
Immunogen:	The immunogen is a synthetic peptide directed towards the middle region of human MLC1
Specificity:	Expected reactivity: Cow, Dog, Guinea Pig, Horse, Human, Mouse, Rabbit, Rat Homology: Cow: 91%; Dog: 86%; Guinea Pig: 92%; Horse: 86%; Human: 100%; Mouse: 93%; Rabbit: 83%; Rat: 93%
Formulation:	Liquid. Purified antibody supplied in 1x PBS buffer with 0.09% (w/v) sodium azide and 2% sucrose. <i>Note that this product is shipped as lyophilized powder to China customers.</i>
Concentration:	lot specific
Purification:	Affinity Purified
Conjugation:	Unconjugated
Storage:	For short term use, store at 2-8°C up to 1 week. For long term storage, store at -20°C in small aliquots to prevent freeze-thaw cycles.
Stability:	Shelf life: one year from despatch.
Predicted Protein Size:	41kDa
Gene Name:	megalencephalic leukoencephalopathy with subcortical cysts 1
Database Link:	NP_055981 Entrez Gene 23209 Human Q15049



[View online »](#)

Background:

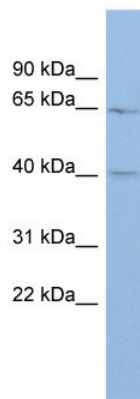
MLC1 may be a transporter. It may act as a non-selective neuronal cation channel. The function of this gene product is unknown; however, homology to other proteins suggests that it may be an integral membrane transporter. Mutations in this gene have been associated with megalencephalic leukoencephalopathy with subcortical cysts, an autosomal recessive neurological disorder. Alternatively spliced transcript variants encoding different isoforms have been identified.

Synonyms:

KIAA0027; LVM; MLC; VL; WKL1

Protein Families:

Ion Channels: Other, Transmembrane

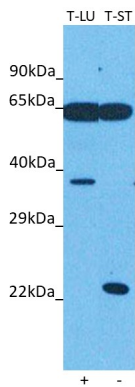
Product images:


WB Suggested Anti-MLC1 Antibody Titration: 0.2-1 ug/ml
 ELISA Titer: 1:12500
 Positive Control: Human Spleen

MLC1


Rabbit Anti-MLC1
 Sample Type: Human Fetal Spleen
 Antibody Concentration: 1ug/mL

Host: Rabbit
 Target Name: MLC1
 Sample Type: Human Fetal Spleen
 Antibody Dilution: 1.0ug/ml



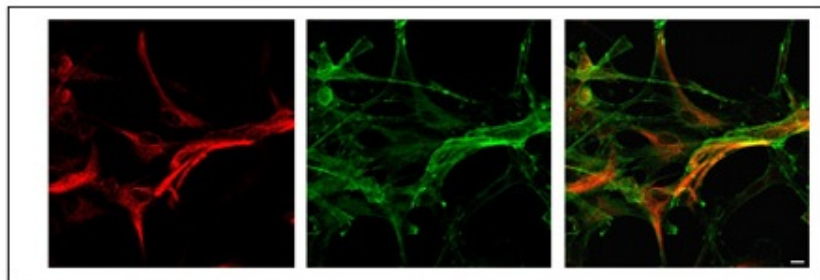
Host: Rabbit
 Target name: MLC1
 Positive control: ~25ug Human Lung Tumor (T-LU)
 Negative control: ~25ug Human Stomach Tumor (T-ST)
 Antibody concentration: 1ug/ml

Host: Rabbit
 Target: MLC1
 Positive control (+): Human lung (LU)
 Negative control (-): Human stomach (ST)
 Antibody concentration: 1ug/ml

Immunohistochemistry

Sample: Rat Astrocytes

Dilution: 1:50



Sample type:
 Rat Astrocytes Dilution:
 1:50