

Product datasheet for **TA355750**

TRPM5 Rabbit Polyclonal Antibody

Product data:

Product Type:	Primary Antibodies
Applications:	IHC, WB
Reactivity:	Human
Host:	Rabbit
Clonality:	Polyclonal
Immunogen:	The immunogen is a synthetic peptide directed towards the N terminal region of human TRPM5
Specificity:	Expected reactivity: Cow, Dog, Guinea Pig, Horse, Human, Mouse, Rat Homology: Cow: 93%; Dog: 93%; Guinea Pig: 79%; Horse: 93%; Human: 100%; Mouse: 100%; Rat: 86%
Formulation:	Liquid. Purified antibody supplied in 1x PBS buffer with 0.09% (w/v) sodium azide and 2% sucrose. <i>Note that this product is shipped as lyophilized powder to China customers.</i>
Concentration:	lot specific
Purification:	Affinity Purified
Conjugation:	Unconjugated
Storage:	For short term use, store at 2-8°C up to 1 week. For long term storage, store at -20°C in small aliquots to prevent freeze-thaw cycles.
Stability:	Shelf life: one year from despatch.
Predicted Protein Size:	131kDa
Gene Name:	transient receptor potential cation channel subfamily M member 5
Database Link:	NP_055370 Entrez Gene 29850 Human Q9NZQ8
Background:	TRPM5 is a voltage-modulated Ca(2+)-activated, monovalent cation channel (VCAM) that mediates a transient membrane depolarization and plays a central role in taste transduction. It is activated by arachidonic acid in vitro. It may be involved in perception of bitter, sweet and umami tastes. It may also be involved in sensing semiochemicals.



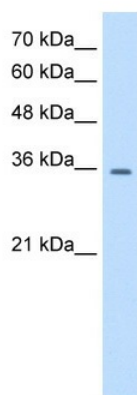
[View online »](#)

Synonyms: LTrpC5; MTR1

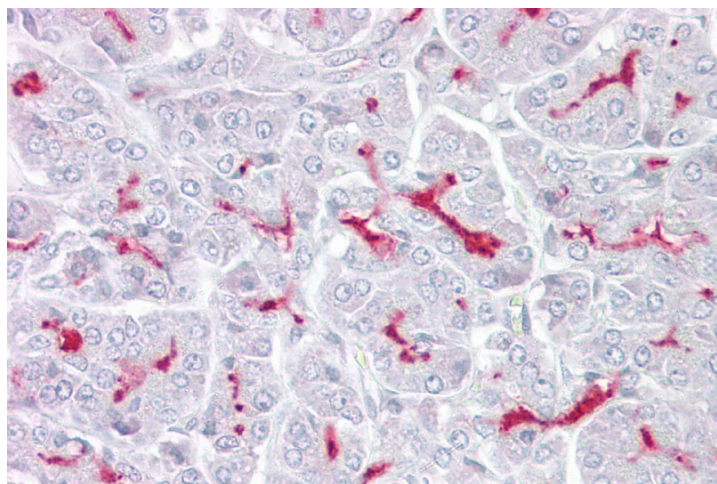
Protein Families: Druggable Genome, Ion Channels: Transient receptor potential, Transmembrane

Protein Pathways: Taste transduction

Product images:



WB Suggested Anti-TRPM5 Antibody Titration:
0.2-1 ug/ml
ELISA Titer: 1:62500
Positive Control: HepG2 cell lysate



Immunohistochemistry with Pancreas tissue at an antibody concentration of 5ug/ml using anti-TRPM5 antibody (TA355750)