

Product datasheet for **TA355747**

Nav1.6 (SCN8A) Rabbit Polyclonal Antibody

Product data:

Product Type:	Primary Antibodies
Applications:	IHC, WB
Reactivity:	Human
Host:	Rabbit
Clonality:	Polyclonal
Immunogen:	The immunogen is a synthetic peptide directed towards the C-terminal region of human SCN8A
Specificity:	Expected reactivity: Cow, Dog, Horse, Human, Mouse, Pig, Rabbit, Rat Homology: Cow: 100%; Dog: 100%; Horse: 100%; Human: 100%; Mouse: 100%; Pig: 100%; Rabbit: 100%; Rat: 100%
Formulation:	Liquid. Purified antibody supplied in 1x PBS buffer with 0.09% (w/v) sodium azide and 2% sucrose. <i>Note that this product is shipped as lyophilized powder to China customers.</i>
Concentration:	lot specific
Purification:	Affinity Purified
Conjugation:	Unconjugated
Storage:	For short term use, store at 2-8°C up to 1 week. For long term storage, store at -20°C in small aliquots to prevent freeze-thaw cycles.
Stability:	Shelf life: one year from despatch.
Predicted Protein Size:	52kDa
Gene Name:	sodium voltage-gated channel alpha subunit 8
Database Link:	NP_001171455.1 Entrez Gene 6334 Human Q9UQD0



[View online »](#)

Background:

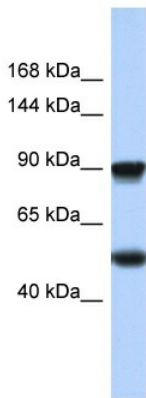
This gene encodes a member of the sodium channel alpha subunit gene family. The encoded protein forms the ion pore region of the voltage-gated sodium channel. This protein is essential for the rapid membrane depolarization that occurs during the formation of the action potential in excitable neurons. Mutations in this gene are associated with mental retardation, pancerebellar atrophy and ataxia. Alternate splicing results in multiple transcript variants.

Synonyms:

CerIII; MED; NaCh6; Nav1.6; PN4

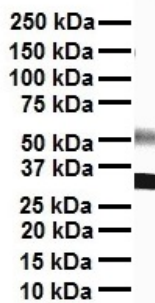
Protein Families:

Druggable Genome, Ion Channels: Sodium, Transmembrane

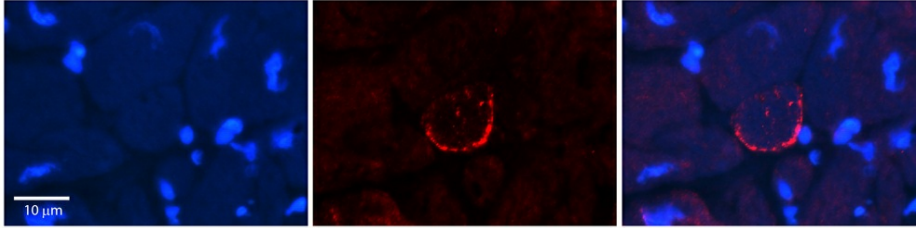
Product images:


Host: Rabbit
 Target Name: SCN8A
 Sample Tissue: Fetal Heart Lysate
 Antibody Dilution: 1.0µg/ml

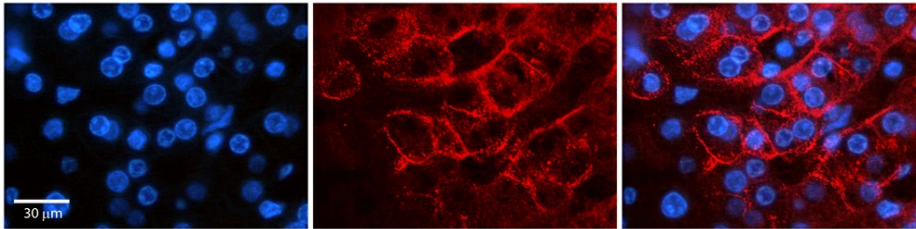
Host: Rabbit
 Target Name: SCN8A
 Sample Type: Fetal Heart lysates
 Antibody Dilution: 1.0ug/ml



WB Suggested Anti-SCN8A antibody Titration: 1 ug/mL
 Sample Type: Human heart



Rabbit Anti-SCN8A Antibody
Catalog Number: TA355747
Formalin Fixed Paraffin Embedded Tissue:
Human Adult heart
Observed Staining: Membrane
Primary Antibody Concentration: 1:100
Secondary Antibody: Donkey anti-Rabbit-Cy2/3
Secondary Antibody Concentration: 1:200
Magnification: 20X
Exposure Time: 0.5–2.0 sec
Protocol located in Reviews and Data.



Rabbit Anti-SCN8A Antibody
Catalog Number: TA355747
Formalin Fixed Paraffin Embedded Tissue:
Human Adult liver
Observed Staining: Membrane
Primary Antibody Concentration: 1:100
Secondary Antibody: Donkey anti-Rabbit-Cy2/3
Secondary Antibody Concentration: 1:200
Magnification: 20X
Exposure Time: 0.5–2.0 sec
Protocol located in Reviews and Data.