

## Product datasheet for **TA355743**

### MRP4 (ABCC4) Rabbit Polyclonal Antibody

#### Product data:

Product Type:	Primary Antibodies
Applications:	WB
Reactivity:	Human
Host:	Rabbit
Clonality:	Polyclonal
Specificity:	<b>Expected reactivity:</b> Cow, Dog, Guinea Pig, Horse, Human, Mouse, Rabbit, Rat, Yeast <b>Homology:</b> Cow: 86%; Dog: 93%; Guinea Pig: 86%; Horse: 86%; Human: 100%; Mouse: 93%; Rabbit: 100%; Rat: 93%; Yeast: 79%
Formulation:	Liquid. Purified antibody supplied in 1x PBS buffer with 0.09% (w/v) sodium azide and 2% sucrose. <i>Note that this product is shipped as lyophilized powder to China customers.</i>
Concentration:	lot specific
Purification:	Affinity Purified
Conjugation:	Unconjugated
Storage:	For short term use, store at 2-8°C up to 1 week. For long term storage, store at -20°C in small aliquots to prevent freeze-thaw cycles.
Stability:	Shelf life: one year from despatch.
Predicted Protein Size:	98kDa
Gene Name:	ATP binding cassette subfamily C member 4
Database Link:	<a href="#">NP_001098985</a> <a href="#">Entrez Gene 10257 Human</a> <a href="#">O15439</a>
Background:	The protein encoded by this gene is a member of the superfamily of ATP-binding cassette (ABC) transporters. ABC proteins transport various molecules across extra- and intra-cellular membranes. ABC genes are divided into seven distinct subfamilies (ABC1, MDR/TAP, MRP, ALD, OABP, GCN20, White). This protein is a member of the MRP subfamily which is involved in multi-drug resistance. The specific function of this protein has not yet been determined; however, this protein may play a role in cellular detoxification as a pump for its substrate, organic anions.



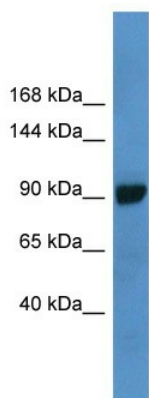
[View online »](#)

**Synonyms:** EST170205; MOAT-B; MOATB; MRP4

**Protein Families:** Druggable Genome, Ion Channels: Other, Transmembrane

**Protein Pathways:** ABC transporters

### Product images:



WB Suggested Anti-ABCC4 Antibody  
Titration: 1.0 ug/ml  
Positive Control: 721\_B Whole Cell ABCC4 is supported by BioGPS gene expression data to be expressed in 721\_B