

## Product datasheet for **TA355734**

### **GIRK2 (KCNJ6) Rabbit Polyclonal Antibody**

#### **Product data:**

Product Type:	Primary Antibodies
Applications:	WB
Reactivity:	Human
Host:	Rabbit
Clonality:	Polyclonal
Immunogen:	The immunogen is a synthetic peptide directed towards the C-terminal region of Human KCNJ6
Specificity:	<b>Expected reactivity:</b> Dog, Goat, Guinea Pig, Human, Mouse, Rabbit, Rat, Yeast, Zebrafish <b>Homology:</b> Dog: 100%; Goat: 93%; Guinea Pig: 79%; Human: 100%; Mouse: 86%; Rabbit: 86%; Rat: 93%; Yeast: 75%; Zebrafish: 79%
Formulation:	Liquid. Purified antibody supplied in 1x PBS buffer with 0.09% (w/v) sodium azide and 2% sucrose. <i>Note that this product is shipped as lyophilized powder to China customers.</i>
Concentration:	lot specific
Purification:	Affinity Purified
Conjugation:	Unconjugated
Storage:	For short term use, store at 2-8°C up to 1 week. For long term storage, store at -20°C in small aliquots to prevent freeze-thaw cycles.
Stability:	Shelf life: one year from despatch.
Predicted Protein Size:	46kDa
Gene Name:	potassium voltage-gated channel subfamily J member 6
Database Link:	<a href="#">Entrez Gene 3763 Human P48051</a>



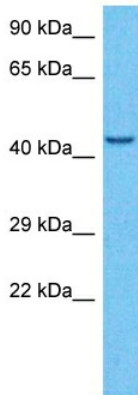
[View online »](#)

**Background:**

Potassium channels are present in most mammalian cells, where they participate in a wide range of physiologic responses. The protein encoded by this gene is an integral membrane protein and inward-rectifier type potassium channel. The encoded protein, which has a greater tendency to allow potassium to flow into a cell rather than out of a cell, is controlled by G-proteins and may be involved in the regulation of insulin secretion by glucose. It associates with two other G-protein-activated potassium channels to form a heteromultimeric pore-forming complex.

**Synonyms:**

BIR1; GIRK2; hiGIRK2; KATP-2; KATP2; KCNJ7; KIR3.2; MGC126596

**Product images:**

Host: Rabbit  
Target Name: KCNJ6  
Sample Tissue: MCF7 Cell Lysate  
Antibody Dilution: 1.0 $\mu$ g/ml

Host: Rabbit  
Target Name: KCNJ6  
Sample Type: MCF7 Whole Cell lysates  
Antibody Dilution: 1.0 $\mu$ g/ml