

Product datasheet for **TA355732**

ITPR2 Rabbit Polyclonal Antibody

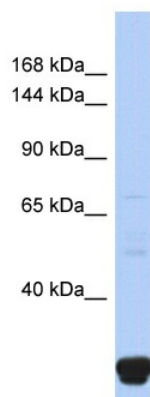
Product data:

| | |
|-------------------------|-------------------------------------------------------------------------------------------------------------------------------------------------------------------------------------------------------------------------------------------|
| Product Type: | Primary Antibodies |
| Applications: | WB |
| Reactivity: | Human |
| Host: | Rabbit |
| Clonality: | Polyclonal |
| Immunogen: | The immunogen is a synthetic peptide directed towards the N-terminal region of HUMAN ITPR2 |
| Specificity: | Expected reactivity: Cow, Dog, Guinea Pig, Horse, Human, Mouse, Rabbit, Rat, Zebrafish Homology: Cow: 100%; Dog: 100%; Guinea Pig: 100%; Horse: 100%; Human: 100%; Mouse: 100%; Rabbit: 100%; Rat: 100%; Zebrafish: 100% |
| Formulation: | Liquid. Purified antibody supplied in 1x PBS buffer with 0.09% (w/v) sodium azide and 2% sucrose. <i>Note that this product is shipped as lyophilized powder to China customers.</i> |
| Concentration: | lot specific |
| Purification: | Affinity Purified |
| Conjugation: | Unconjugated |
| Storage: | For short term use, store at 2-8°C up to 1 week. For long term storage, store at -20°C in small aliquots to prevent freeze-thaw cycles. |
| Stability: | Shelf life: one year from despatch. |
| Predicted Protein Size: | 19kDa |
| Gene Name: | inositol 1,4,5-trisphosphate receptor type 2 |
| Database Link: | Entrez Gene 3709 Human Q14571-2 |
| Background: | ITPR2 is a receptor for inositol 1,4,5-trisphosphate, a second messenger that mediates the release of intracellular calcium. This release is regulated by cAMP both dependently and independently of PKA. |
| Synonyms: | InsP3R2; IP3R2 |



[View online »](#)

Product images:



Host: Rabbit
Target Name: ITPR2
Sample Tissue:
Fetal Small Intestine Lysate
Antibody Dilution: 1.0 μ g/ml

Host: Rabbit
Target Name: ITPR2
Sample Type: Fetal Small Intestine lysates
Antibody Dilution: 1.0 μ g/ml