

## Product datasheet for **TA355723**

### GABA A Receptor alpha 6 (GABRA6) Rabbit Polyclonal Antibody

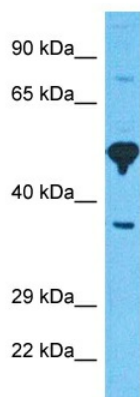
#### Product data:

Product Type:	Primary Antibodies
Applications:	WB
Reactivity:	Human
Host:	Rabbit
Clonality:	Polyclonal
Immunogen:	The immunogen is a synthetic peptide directed towards the N-terminal region of Human GBRA6
Specificity:	<b>Expected reactivity:</b> Cow, Dog, Horse, Human, Pig, Rabbit <b>Homology:</b> Cow: 92%; Dog: 92%; Horse: 93%; Human: 100%; Pig: 93%; Rabbit: 79%
Formulation:	Liquid. Purified antibody supplied in 1x PBS buffer with 0.09% (w/v) sodium azide and 2% sucrose. <i>Note that this product is shipped as lyophilized powder to China customers.</i>
Concentration:	lot specific
Purification:	Affinity Purified
Conjugation:	Unconjugated
Storage:	For short term use, store at 2-8°C up to 1 week. For long term storage, store at -20°C in small aliquots to prevent freeze-thaw cycles.
Stability:	Shelf life: one year from despatch.
Predicted Protein Size:	49kDa
Gene Name:	gamma-aminobutyric acid type A receptor alpha6 subunit
Database Link:	<a href="#">NP_000802</a> <a href="#">Entrez Gene 2559 Human</a> <a href="#">Q16445</a>
Background:	GABA is the major inhibitory neurotransmitter in the mammalian brain where it acts at GABA-A receptors, which are ligand-gated chloride channels. Chloride conductance of these channels can be modulated by agents such as benzodiazepines that bind to the GABA-A receptor. At least 16 distinct subunits of GABA-A receptors have been identified.
Synonyms:	MGC116903; MGC116904



[View online »](#)

## Product images:



Host: Rabbit  
Target Name: GBRA6  
Sample Tissue: 293T Cell Lysate  
Antibody Dilution: 1.0 $\mu$ g/ml

Host: Rabbit  
Target Name: GBRA6  
Sample Type: 293T Whole Cell lysates  
Antibody Dilution: 1 ug/ml