

## Product datasheet for **TA355719**

### Kcnh2 Rabbit Polyclonal Antibody

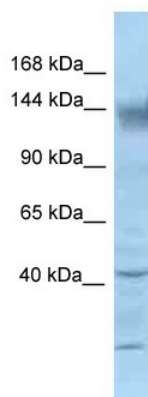
#### Product data:

Product Type:	Primary Antibodies
Applications:	WB
Reactivity:	Mouse
Host:	Rabbit
Clonality:	Polyclonal
Specificity:	<b>Expected reactivity:</b> Cow, Dog, Guinea Pig, Horse, Human, Mouse, Pig, Rabbit, Rat <b>Homology:</b> Cow: 93%; Dog: 86%; Guinea Pig: 86%; Horse: 93%; Human: 100%; Mouse: 100%; Pig: 93%; Rabbit: 100%; Rat: 100%
Formulation:	Liquid. Purified antibody supplied in 1x PBS buffer with 0.09% (w/v) sodium azide and 2% sucrose. <i>Note that this product is shipped as lyophilized powder to China customers.</i>
Concentration:	lot specific
Purification:	Affinity Purified
Conjugation:	Unconjugated
Storage:	For short term use, store at 2-8°C up to 1 week. For long term storage, store at -20°C in small aliquots to prevent freeze-thaw cycles.
Stability:	Shelf life: one year from despatch.
Predicted Protein Size:	127kDa
Gene Name:	potassium voltage-gated channel, subfamily H (eag-related), member 2
Database Link:	<a href="#">NP_038597</a> <a href="#">Entrez Gene 16511 Mouse</a> <a href="#">O35219</a>
Background:	Kcnh2 is a pore-forming (alpha) subunit of voltage-gated inwardly rectifying potassium channel. Channel properties are modulated by cAMP and subunit assembly. It mediates the rapidly activating component of the delayed rectifying potassium current in heart (IKr).
Synonyms:	ERG; ERG1; H-ERG; HERG; HERG1; Kv11.1; LQT2; SQT1



[View online »](#)

Product images:



WB Suggested Anti-Kcnh2 Antibody  
Titration: 1.0 ug/ml  
Positive Control: Mouse Kidney