

Product datasheet for **TA355716**

Zinc finger protein 682 (ZNF682) Rabbit Polyclonal Antibody

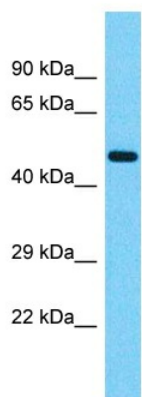
Product data:

Product Type:	Primary Antibodies
Applications:	WB
Reactivity:	Human
Host:	Rabbit
Clonality:	Polyclonal
Immunogen:	The immunogen is a synthetic peptide directed towards the N-terminal region of human ZNF682
Specificity:	Expected reactivity: Human, Mouse Homology: Human: 100%; Mouse: 80%
Formulation:	Liquid. Purified antibody supplied in 1x PBS buffer with 0.09% (w/v) sodium azide and 2% sucrose.
Concentration:	lot specific
Purification:	Affinity Purified
Conjugation:	Unconjugated
Storage:	For short term use, store at 2-8°C up to 1 week. For long term storage, store at -20°C in small aliquots to prevent freeze-thaw cycles.
Stability:	Shelf life: one year from despatch.
Predicted Protein Size:	48kDa
Gene Name:	zinc finger protein 682
Database Link:	NP_149973.1 Entrez Gene 91120 Human O95780
Synonyms:	BC39498_3; FLJ90362
Protein Families:	Transcription Factors



[View online »](#)

Product images:



Host: Rabbit
Target Name: ZNF682
Sample Tissue: Pancreas Tumor Lysate
Antibody Dilution: 1.0 μ g/ml

Host: Rabbit
Target Name: ZNF682
Sample Type: Pancreas Tumor lysates
Antibody Dilution: 1.0ug/ml