

## Product datasheet for **TA355714**

### ZNF258 (ZMYM6) Rabbit Polyclonal Antibody

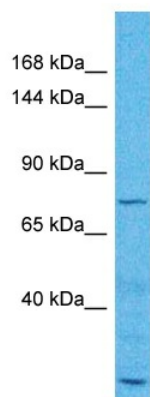
#### Product data:

Product Type:	Primary Antibodies
Applications:	WB
Reactivity:	Human
Host:	Rabbit
Clonality:	Polyclonal
Immunogen:	The immunogen is a synthetic peptide directed towards the N-terminal region of HUMAN ZMYM6
Specificity:	<b>Expected reactivity:</b> Human <b>Homology:</b> Human: 100%
Formulation:	Liquid. Purified antibody supplied in 1x PBS buffer with 0.09% (w/v) sodium azide and 2% sucrose.
Concentration:	lot specific
Purification:	Affinity Purified
Conjugation:	Unconjugated
Storage:	For short term use, store at 2-8°C up to 1 week. For long term storage, store at -20°C in small aliquots to prevent freeze-thaw cycles.
Stability:	Shelf life: one year from despatch.
Predicted Protein Size:	79kDa
Gene Name:	zinc finger MYM-type containing 6
Database Link:	<a href="#">Entrez Gene 9204 Human O95789-1</a>
Background:	ZMYM6 plays a role in the regulation of cell morphology and cytoskeletal organization.
Synonyms:	Buster2; KIAA1353; MYM; ZNF198L4; ZNF258



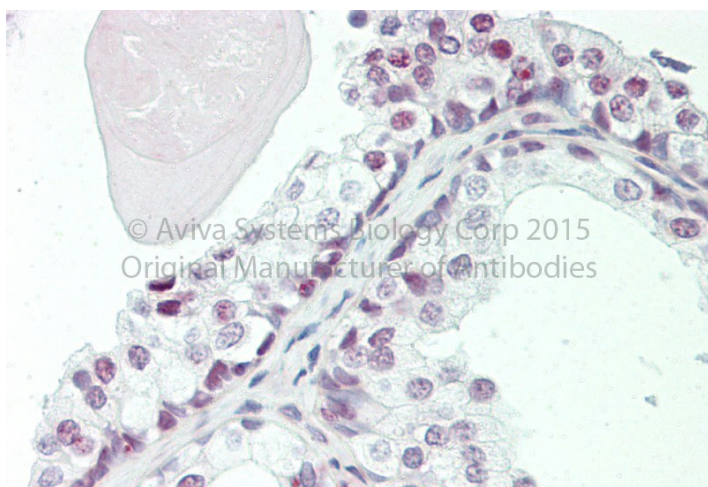
[View online »](#)

## Product images:



Host: Rabbit  
Target Name: ZMYM6  
Sample Tissue: Lung Tumor Lysate  
Antibody Dilution: 1.0 $\mu$ g/ml

Host: Rabbit  
Target Name: ZMYM6  
Sample Type: Lung Tumor lysates  
Antibody Dilution: 1.0ug/ml



Rabbit Anti-ZMYM6  
Catalog Number: ARP34882  
Formalin Fixed Paraffin Embedded Tissue:  
Human Adult Prostate  
Observed Staining: Cytoplasm in hepatocytes  
Primary Antibody Concentration: 1:600  
Secondary Antibody: Donkey anti-Rabbit-Cy3  
Secondary Antibody Concentration: 1:200  
Magnification: 20X  
Exposure Time: 0.5–2.0 sec