

## Product datasheet for **TA355712**

### TRIM35 Rabbit Polyclonal Antibody

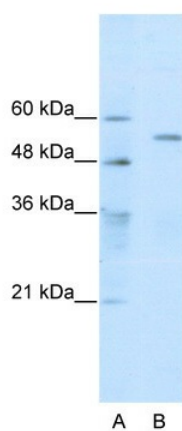
#### Product data:

Product Type:	Primary Antibodies
Applications:	WB
Reactivity:	Human
Host:	Rabbit
Clonality:	Polyclonal
Immunogen:	The immunogen is a synthetic peptide directed towards the C terminal region of human TRIM35
Specificity:	<b>Expected reactivity:</b> Human <b>Homology:</b> Human: 100%
Formulation:	Liquid. Purified antibody supplied in 1x PBS buffer with 0.09% (w/v) sodium azide and 2% sucrose. <i>Note that this product is shipped as lyophilized powder to China customers.</i>
Concentration:	lot specific
Purification:	Affinity Purified
Conjugation:	Unconjugated
Storage:	For short term use, store at 2-8°C up to 1 week. For long term storage, store at -20°C in small aliquots to prevent freeze-thaw cycles.
Stability:	Shelf life: one year from despatch.
Predicted Protein Size:	54kDa
Gene Name:	tripartite motif containing 35
Database Link:	<a href="#">Entrez Gene 23087 Human Q9UPQ4-2</a>
Background:	TRIM35 is a member of the tripartite motif (TRIM) family. The TRIM motif includes three zinc-binding domains, a RING, a B-box type 1 and a B-box type 2, and a coiled-coil region. TRIM35 may play a role as a tumor suppressor, and is implicated in the cell death mechanism
Synonyms:	HLS5; KIAA1098; MAIR; MGC17233



[View online »](#)

## Product images:



WB Suggested Anti-TRIM35 Antibody Titration:  
0.2-1 ug/ml  
ELISA Titer: 1:62500  
Positive Control: HepG2 cell lysate