

Product datasheet for **TA355703**

KLHL3 Rabbit Polyclonal Antibody

Product data:

Product Type:	Primary Antibodies
Applications:	WB
Reactivity:	Human
Host:	Rabbit
Clonality:	Polyclonal
Immunogen:	The immunogen is a synthetic peptide directed towards the N-terminal region of Human KLHL3
Specificity:	Expected reactivity: Cow, Dog, Guinea Pig, Horse, Human, Mouse, Rabbit, Rat, Yeast, Zebrafish Homology: Cow: 100%; Dog: 100%; Guinea Pig: 100%; Horse: 100%; Human: 100%; Mouse: 100%; Rabbit: 93%; Rat: 100%; Yeast: 90%; Zebrafish: 86%
Formulation:	Liquid. Purified antibody supplied in 1x PBS buffer with 0.09% (w/v) sodium azide and 2% sucrose. <i>Note that this product is shipped as lyophilized powder to China customers.</i>
Concentration:	lot specific
Purification:	Affinity Purified
Conjugation:	Unconjugated
Storage:	For short term use, store at 2-8°C up to 1 week. For long term storage, store at -20°C in small aliquots to prevent freeze-thaw cycles.
Stability:	Shelf life: one year from despatch.
Predicted Protein Size:	55kDa
Gene Name:	kelch like family member 3
Database Link:	Entrez Gene 26249 Human Q9UH77-3



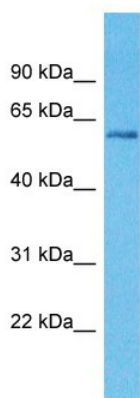
[View online »](#)

Background:

KLHL3 protein contains a poxvirus and zinc finger domain at the N-terminus and six tandem repeats (kelch repeats) at the C-terminus. At the amino acid level, KLHL3 shares 77% similarity with *Drosophila* kelch and 89% similarity with Mayven (KLHL2), another human kelch homolog. At least three isoforms are produced and may be the result of alternative promoter usage. The KLHL3 maps within the smallest commonly deleted segment in myeloid leukemias characterized by a deletion of 5q; however, no inactivating mutations of KLHL3 could be detected in malignant myeloid disorders with loss of 5q.

Synonyms:

FLJ40871; KIAA1129; MGC44594

Product images:

Host: Rabbit
Target Name: KLHL3
Sample Type: Breast Tumor lysates
Antibody Dilution: 1.0ug/ml