

Product datasheet for **TA355700**

Thra Rabbit Polyclonal Antibody

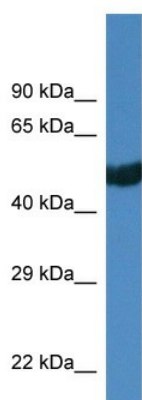
Product data:

Product Type:	Primary Antibodies
Applications:	WB
Reactivity:	Rat
Host:	Rabbit
Clonality:	Polyclonal
Immunogen:	The immunogen is a synthetic peptide corresponding to a region of Rat
Specificity:	Expected reactivity: Cow, Dog, Guinea Pig, Horse, Human, Mouse, Rabbit, Rat, Sheep, Zebrafish Homology: Cow: 100%; Dog: 100%; Guinea Pig: 100%; Horse: 100%; Human: 100%; Mouse: 100%; Rabbit: 100%; Rat: 100%; Sheep: 100%; Zebrafish: 79%
Formulation:	Liquid. Purified antibody supplied in 1x PBS buffer with 0.09% (w/v) sodium azide and 2% sucrose. <i>Note that this product is shipped as lyophilized powder to China customers.</i>
Concentration:	lot specific
Purification:	Affinity Purified
Conjugation:	Unconjugated
Storage:	For short term use, store at 2-8°C up to 1 week. For long term storage, store at -20°C in small aliquots to prevent freeze-thaw cycles.
Stability:	Shelf life: one year from despatch.
Predicted Protein Size:	55kDa
Gene Name:	thyroid hormone receptor alpha
Database Link:	NP_001017960 Entrez Gene 81812 Rat P63059
Background:	Thra binds the promoter of the Na ⁺ /H ⁺ exchanger NHE1 and mediates thyroid hormone induced transcriptional activation.
Synonyms:	AR7; c-ERBA-1; C-erbA-alpha; EAR-7; EAR-7.1/EAR-7.2; EAR7; ERB-T-1; ERBA; ERBA1; MGC000261; MGC43240; NR1A1; THRA1; THRA2; THRA3



[View online »](#)

Product images:



WB Suggested Anti-Thra Antibody
Titration: 1.0 ug/ml
Positive Control: Rat Muscle