

Product datasheet for **TA355698**

Uhrf2 Rabbit Polyclonal Antibody

Product data:

Product Type:	Primary Antibodies
Applications:	WB
Reactivity:	Mouse
Host:	Rabbit
Clonality:	Polyclonal
Specificity:	Expected reactivity: Cow, Dog, Goat, Guinea Pig, Horse, Human, Mouse, Rabbit, Rat Homology: Cow: 100%; Dog: 100%; Goat: 79%; Guinea Pig: 100%; Horse: 100%; Human: 100%; Mouse: 100%; Rabbit: 100%; Rat: 100%
Formulation:	Liquid. Purified antibody supplied in 1x PBS buffer with 0.09% (w/v) sodium azide and 2% sucrose. <i>Note that this product is shipped as lyophilized powder to China customers.</i>
Concentration:	lot specific
Purification:	Affinity Purified
Conjugation:	Unconjugated
Storage:	For short term use, store at 2-8°C up to 1 week. For long term storage, store at -20°C in small aliquots to prevent freeze-thaw cycles.
Stability:	Shelf life: one year from despatch.
Predicted Protein Size:	90kDa
Gene Name:	ubiquitin-like, containing PHD and RING finger domains 2
Database Link:	NP_659122 Entrez Gene 109113 Mouse Q7TMI3
Background:	Uhrf2 is an E3 ubiquitin-protein ligase which mediates ubiquitination and subsequent proteasomal degradation of PCNP. It may participate in methylation-dependent transcriptional regulation. It is important for G1/S transition. Overexpression causes G1 phase cell arrest.
Synonyms:	DKFZp434B0920; DKFZp686G0837; MGC33463; NIRF; RNF107; URF2



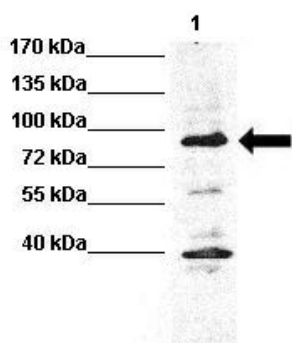
[View online »](#)

Product images:



WB Suggested Anti-Uhrf2 Antibody
 Titration: 1.0 ug/ml
 Positive Control: Mouse Pancreas

UHRF2



WB Suggested Anti-Uhrf2 Antibody
 Positive Control: Lane 1: 60ug HCT116 lysate
 Primary Antibody Dilution : 1:1000
 Secondary Antibody : Anti rabbit-HRP
 Secondary Antibody Dilution : 1:5,000
 Submitted by: Chinweike Ukomadu, Brigham and
 Women's Hospital, Boston