

## Product datasheet for **TA355689**

### KLHL6 Rabbit Polyclonal Antibody

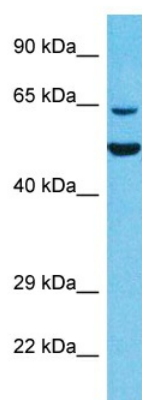
#### Product data:

Product Type:	Primary Antibodies
Applications:	WB
Reactivity:	Human
Host:	Rabbit
Clonality:	Polyclonal
Immunogen:	The immunogen is a synthetic peptide directed towards the N-terminal region of Human KLHL6
Specificity:	<b>Expected reactivity:</b> Cow, Dog, Guinea Pig, Horse, Human, Mouse, Rabbit, Rat <b>Homology:</b> Cow: 100%; Dog: 100%; Guinea Pig: 100%; Horse: 100%; Human: 100%; Mouse: 93%; Rabbit: 100%; Rat: 100%
Formulation:	Liquid. Purified antibody supplied in 1x PBS buffer with 0.09% (w/v) sodium azide and 2% sucrose.
Concentration:	lot specific
Purification:	Affinity Purified
Conjugation:	Unconjugated
Storage:	For short term use, store at 2-8°C up to 1 week. For long term storage, store at -20°C in small aliquots to prevent freeze-thaw cycles.
Stability:	Shelf life: one year from despatch.
Predicted Protein Size:	68kDa
Gene Name:	kelch like family member 6
Database Link:	<a href="#">NP_569713</a> <a href="#">Entrez Gene 89857 Human</a> <a href="#">Q8WZ60</a>
Background:	KLHL6 involved in B-lymphocyte antigen receptor signaling and germinal center formation (By similarity).
Synonyms:	FLJ00029



[View online »](#)

## Product images:



Host: Rabbit  
Target Name: KLHL6  
Sample Tissue: 293T Cell Lysate  
Antibody Dilution: 1.0 $\mu$ g/ml

Host: Rabbit  
Target Name: KLHL6  
Sample Type: 293T Whole Cell lysates  
Antibody Dilution: 1  $\mu$ g/ml