

Product datasheet for **TA355685**

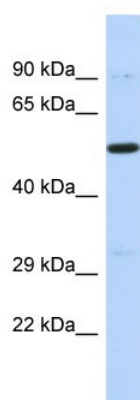
PRDM11 Rabbit Polyclonal Antibody

Product data:

Product Type:	Primary Antibodies
Applications:	WB
Reactivity:	Human
Host:	Rabbit
Clonality:	Polyclonal
Immunogen:	The immunogen is a synthetic peptide directed towards the C-terminal region of Human PRDM11
Specificity:	Expected reactivity: Cow, Dog, Horse, Human, Mouse, Pig, Rabbit, Rat Homology: Cow: 93%; Dog: 93%; Horse: 86%; Human: 100%; Mouse: 86%; Pig: 93%; Rabbit: 86%; Rat: 86%
Formulation:	Liquid. Purified antibody supplied in 1x PBS buffer with 0.09% (w/v) sodium azide and 2% sucrose.
Concentration:	lot specific
Purification:	Affinity Purified
Conjugation:	Unconjugated
Storage:	For short term use, store at 2-8°C up to 1 week. For long term storage, store at -20°C in small aliquots to prevent freeze-thaw cycles.
Stability:	Shelf life: one year from despatch.
Predicted Protein Size:	52kDa
Gene Name:	PR domain 11
Database Link:	NP_001243625 Entrez Gene 56981 Human Q9NQV5-2
Background:	The function of this protein remains unknown.
Synonyms:	PFM8



[View online »](#)

Product images:

Host: Rabbit
Target Name: PRDM11
Sample Type: 721_B Whole cell lysates
Antibody Dilution: 1.0ug/ml PRDM11 is supported by BioGPS gene expression data to be expressed in 721_B