

Product datasheet for **TA355682**

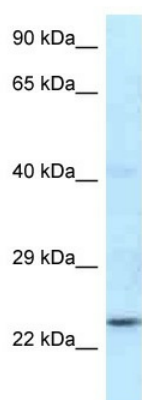
Rnf141 Rabbit Polyclonal Antibody

Product data:

Product Type:	Primary Antibodies
Applications:	WB
Reactivity:	Mouse
Host:	Rabbit
Clonality:	Polyclonal
Specificity:	Expected reactivity: Cow, Dog, Guinea Pig, Horse, Human, Mouse, Rabbit, Rat Homology: Cow: 93%; Dog: 93%; Guinea Pig: 100%; Horse: 93%; Human: 100%; Mouse: 100%; Rabbit: 93%; Rat: 100%
Formulation:	Liquid. Purified antibody supplied in 1x PBS buffer with 0.09% (w/v) sodium azide and 2% sucrose.
Concentration:	lot specific
Purification:	Affinity Purified
Conjugation:	Unconjugated
Storage:	For short term use, store at 2-8°C up to 1 week. For long term storage, store at -20°C in small aliquots to prevent freeze-thaw cycles.
Stability:	Shelf life: one year from despatch.
Predicted Protein Size:	25kDa
Gene Name:	ring finger protein 141
Database Link:	NP_080275 Entrez Gene 67150 Mouse Q99MB7
Background:	Rnf141 may be involved in spermatogenesis.
Synonyms:	MGC8715; ZFP26; ZNF230



[View online »](#)

Product images:

WB Suggested Anti-Rnf141 Antibody
Titration: 1.0 ug/ml
Positive Control: Mouse Kidney