

Product datasheet for **TA355681**

SMARCAD1 Rabbit Polyclonal Antibody

Product data:

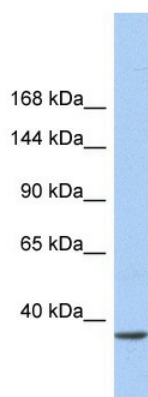
Product Type:	Primary Antibodies
Applications:	WB
Reactivity:	Human
Host:	Rabbit
Clonality:	Polyclonal
Immunogen:	The immunogen is a synthetic peptide directed towards the N terminal region of human SMARCAD1
Specificity:	Expected reactivity: Cow, Dog, Horse, Human, Mouse, Pig, Rabbit, Rat Homology: Cow: 92%; Dog: 100%; Horse: 100%; Human: 100%; Mouse: 92%; Pig: 86%; Rabbit: 92%; Rat: 92%
Formulation:	Liquid. Purified antibody supplied in 1x PBS buffer with 0.09% (w/v) sodium azide and 2% sucrose. <i>Note that this product is shipped as lyophilized powder to China customers.</i>
Concentration:	lot specific
Purification:	Affinity Purified
Conjugation:	Unconjugated
Storage:	For short term use, store at 2-8°C up to 1 week. For long term storage, store at -20°C in small aliquots to prevent freeze-thaw cycles.
Stability:	Shelf life: one year from despatch.
Predicted Protein Size:	39kDa
Gene Name:	SWI/SNF-related, matrix-associated actin-dependent regulator of chromatin, subfamily a, containing DEAD/H box 1
Database Link:	AAH17953 Entrez Gene 56916 Human Q9H4L7
Background:	SMARCAD1 belongs to the SNF2/RAD54 helicase family. It contains 2 CUE domains, 1 helicase ATP-binding domain, and 1 helicase C-terminal domain. It is a probable ATP-dependent DNA helicase.



[View online »](#)

Synonyms: DKFZP762K2015; ETL1; HEL1; hHEL1; KIAA1122; OTTHUMP00000161596

Product images:



WB Suggested Anti-SMARCAD1 Antibody
Titration: 0.2-1 ug/ml
ELISA Titer: 1:12500
Positive Control: Human heart