

Product datasheet for **TA355675**

nkx6.3 (NKX6-3) Rabbit Polyclonal Antibody

Product data:

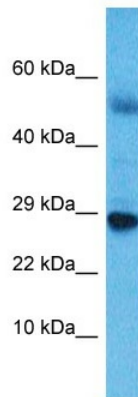
Product Type:	Primary Antibodies
Applications:	WB
Reactivity:	Human
Host:	Rabbit
Clonality:	Polyclonal
Immunogen:	The immunogen is a synthetic peptide directed towards the C-terminal region of Human NKX6-3
Specificity:	Expected reactivity: Human, Mouse, Rabbit, Rat Homology: Human: 100%; Mouse: 83%; Rabbit: 86%; Rat: 93%
Formulation:	Liquid. Purified antibody supplied in 1x PBS buffer with 0.09% (w/v) sodium azide and 2% sucrose. <i>Note that this product is shipped as lyophilized powder to China customers.</i>
Concentration:	lot specific
Purification:	Affinity Purified
Conjugation:	Unconjugated
Storage:	For short term use, store at 2-8°C up to 1 week. For long term storage, store at -20°C in small aliquots to prevent freeze-thaw cycles.
Stability:	Shelf life: one year from despatch.
Predicted Protein Size:	29kDa
Gene Name:	NK6 homeobox 3
Database Link:	Entrez Gene 157848 Human A6NJ46



[View online »](#)

Background:

Nkx6.3 is a new member of the Nkx6 subfamily of homeodomain proteins. Members of the Nkx family of homeodomain proteins are involved in a variety of developmental processes such as cell fate determination in the CNS and in the pancreas. Nkx6.3 is expressed in the developing CNS and gastro-intestinal tract. Nkx6.3 shows a remarkably selective expression in a subpopulation of differentiating V2 neurons at caudal hindbrain levels. In the gut, Nkx6.3 is expressed in duodenal and glandular stomach endoderm and at the end of gestation Nkx6.3 became restricted to the base of the gastric units in the glandular stomach.

Product images:

Host: Rabbit
Target Name: NKX6-3
Sample Type: Esophagus Tumor lysates
Antibody Dilution: 1.0ug/ml