

## Product datasheet for **TA355671**

### APOBEC3D Rabbit Polyclonal Antibody

#### Product data:

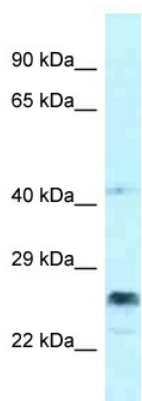
Product Type:	Primary Antibodies
Applications:	WB
Reactivity:	Human
Host:	Rabbit
Clonality:	Polyclonal
Immunogen:	The immunogen is a synthetic peptide directed towards the C-terminal region of human APOBEC3D
Specificity:	<b>Expected reactivity:</b> Cow, Human, Pig, Rabbit <b>Homology:</b> Cow: 77%; Human: 100%; Pig: 77%; Rabbit: 85%
Formulation:	Liquid. Purified antibody supplied in 1x PBS buffer with 0.09% (w/v) sodium azide and 2% sucrose. <i>Note that this product is shipped as lyophilized powder to China customers.</i>
Concentration:	lot specific
Purification:	Affinity Purified
Conjugation:	Unconjugated
Storage:	For short term use, store at 2-8°C up to 1 week. For long term storage, store at -20°C in small aliquots to prevent freeze-thaw cycles.
Stability:	Shelf life: one year from despatch.
Predicted Protein Size:	22kDa
Gene Name:	apolipoprotein B mRNA editing enzyme catalytic subunit 3D
Database Link:	<a href="#">XP_005261394.1</a> <a href="#">Entrez Gene 140564 Human</a> <a href="#">Q6ICH2</a>
Background:	This gene is a member of the cytidine deaminase gene family. It is one of a group of related genes found in a cluster, thought to result from gene duplication, on chromosome 22. Members of the cluster encode proteins that are structurally and functionally related to the C to U RNA-editing cytidine deaminase APOBEC1 and inhibit retroviruses, such as HIV, by deaminating cytosine residues in nascent retroviral cDNA.



[View online »](#)

Synonyms: APOBEC3DE; APOBEC3E; ARP6

### Product images:



Host: Rabbit  
Target Name: bK150C2.9  
Sample Tissue: Jurkat Cell Lysate  
Antibody Dilution: 1.0µg/ml

Host: Rabbit  
Target Name: bK150C2.9  
Sample Type: Jurkat Whole Cell lysates  
Antibody Dilution: 1.0ug/ml