

Product datasheet for **TA355666**

Zfp185 Rabbit Polyclonal Antibody

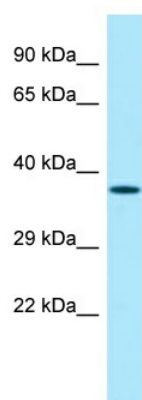
Product data:

Product Type:	Primary Antibodies
Applications:	WB
Reactivity:	Mouse
Host:	Rabbit
Clonality:	Polyclonal
Immunogen:	The immunogen is a synthetic peptide directed towards the middle region of MOUSE Znf185
Specificity:	Expected reactivity: Cow, Dog, Guinea Pig, Horse, Human, Mouse, Pig, Rat Homology: Cow: 100%; Dog: 100%; Guinea Pig: 92%; Horse: 100%; Human: 100%; Mouse: 92%; Pig: 100%; Rat: 100%
Formulation:	Liquid. Purified antibody supplied in 1x PBS buffer with 0.09% (w/v) sodium azide and 2% sucrose.
Concentration:	lot specific
Purification:	Affinity Purified
Conjugation:	Unconjugated
Storage:	For short term use, store at 2-8°C up to 1 week. For long term storage, store at -20°C in small aliquots to prevent freeze-thaw cycles.
Stability:	Shelf life: one year from despatch.
Predicted Protein Size:	38kDa
Gene Name:	zinc finger protein 185
Database Link:	Entrez Gene 22673 Mouse Q62394
Synonyms:	P1; P1-; Znf185



[View online »](#)

Product images:



Host: Rabbit
Target Name: Znf185
Sample Tissue: Mouse Stomach Lysate
Antibody Dilution: 1.0 μ g/ml

Host: Rabbit
Target Name: Znf185
Sample Type: Mouse Stomach lysates
Antibody Dilution: 1.0ug/ml