

Product datasheet for **TA355662**

Pax8 Rabbit Polyclonal Antibody

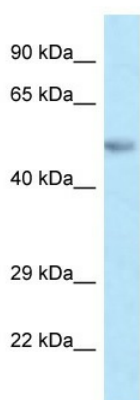
Product data:

Product Type:	Primary Antibodies
Applications:	IHC, WB
Reactivity:	Human, Mouse
Host:	Rabbit
Clonality:	Polyclonal
Specificity:	Expected reactivity: Cow, Dog, Guinea Pig, Horse, Human, Mouse, Pig, Rabbit, Rat Homology: Cow: 100%; Dog: 100%; Guinea Pig: 93%; Horse: 100%; Human: 100%; Mouse: 100%; Pig: 100%; Rabbit: 100%; Rat: 100%
Formulation:	Liquid. Purified antibody supplied in 1x PBS buffer with 0.09% (w/v) sodium azide and 2% sucrose. <i>Note that this product is shipped as lyophilized powder to China customers.</i>
Concentration:	lot specific
Purification:	Affinity Purified
Conjugation:	Unconjugated
Storage:	For short term use, store at 2-8°C up to 1 week. For long term storage, store at -20°C in small aliquots to prevent freeze-thaw cycles.
Stability:	Shelf life: one year from despatch.
Predicted Protein Size:	49kDa
Gene Name:	paired box 8
Database Link:	NP_035170 Entrez Gene 7849 Human Entrez Gene 18510 Mouse Q00288
Background:	Pax8 is thought to encode a transcription factor. It may have a role in kidney cell differentiation. It may play a regulatory role in mammalian development.
Synonyms:	PAX8

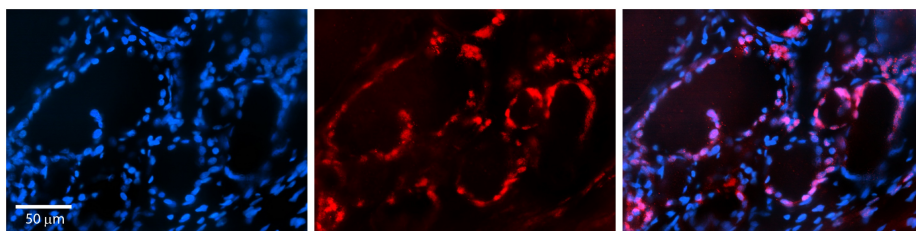


[View online »](#)

Product images:



WB Suggested Anti-Pax8 Antibody
Titration: 1.0 ug/ml
Positive Control: Mouse Pancreas



Rabbit Anti-PAX8 Antibody
Catalog Number: TA355662
Formalin Fixed Paraffin Embedded Tissue:
Human Thyroid Tissue
Observed Staining: Nucleus in follicular cells
Primary Antibody Concentration: N/A
Other Working Concentrations: 1:600
Secondary Antibody: Donkey anti-Rabbit-Cy3
Secondary Antibody Concentration: 1:200
Magnification: 20X
Exposure Time: 0.5–2.0 sec