

Product datasheet for **TA355656**

Ku80 (XRCC5) Rabbit Polyclonal Antibody

Product data:

Product Type:	Primary Antibodies
Applications:	IHC, WB
Reactivity:	Human
Host:	Rabbit
Clonality:	Polyclonal
Immunogen:	The immunogen is a synthetic peptide directed towards the C terminal region of human XRCC5
Specificity:	Expected reactivity: Cow, Dog, Guinea Pig, Horse, Human, Mouse, Rabbit, Rat Homology: Cow: 92%; Dog: 92%; Guinea Pig: 93%; Horse: 100%; Human: 100%; Mouse: 85%; Rabbit: 93%; Rat: 100%
Formulation:	Liquid. Purified antibody supplied in 1x PBS buffer with 0.09% (w/v) sodium azide and 2% sucrose. <i>Note that this product is shipped as lyophilized powder to China customers.</i>
Concentration:	lot specific
Purification:	Protein A purified
Conjugation:	Unconjugated
Storage:	For short term use, store at 2-8°C up to 1 week. For long term storage, store at -20°C in small aliquots to prevent freeze-thaw cycles.
Stability:	Shelf life: one year from despatch.
Predicted Protein Size:	83kDa
Gene Name:	X-ray repair complementing defective repair in Chinese hamster cells 5
Database Link:	NP_066964 Entrez Gene 7520 Human Q4VBQ5



[View online »](#)

Background:

XRCC5 encodes the 80-kilodalton subunit of the Ku heterodimer protein which is also known as ATP-dependant DNA helicase II or DNA repair protein XRCC5. Ku is the DNA-binding component of the DNA-dependent protein kinase, and it functions together with the DNA ligase IV-XRCC4 complex in the repair of DNA double-strand break by non-homologous end joining and the completion of V(D)J recombination events. This gene functionally complements Chinese hamster xrs-6, a mutant defective in DNA double-strand break repair and in ability to undergo V(D)J recombination. A rare microsatellite polymorphism in this gene is associated with cancer in patients of varying radiosensitivity.

Synonyms:

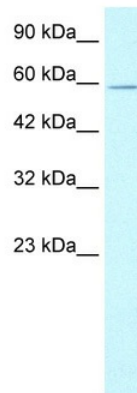
CTC85; CTCBF; FLJ39089; G22P2; KARP-1; KARP1; Ku80; Ku86; KUB2; NFIV; OTTHUMP00000164061; OTTHUMP00000206791; TLAA

Protein Families:

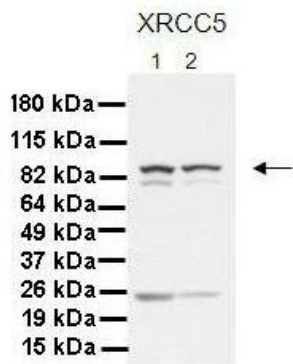
Druggable Genome, Stem cell - Pluripotency

Protein Pathways:

Non-homologous end-joining

Product images:

WB Suggested Anti-XRCC5 Antibody Titration:
1.25ug/ml
ELISA Titer: 1:12500
Positive Control: Jurkat cell lysate
XRCC5 is strongly supported by BioGPS gene expression data to be expressed in Human Jurkat cells



See Immunoblot 2 Data and Customer Feedback for more information

Lanes:

1. 30 ug MiaPaca-2 cell lysate
2. 30 ug Panc-1 cell lysate

Primary Antibody Dilution:
1:1000

Secondary Antibody:

Goat anti-Rabbit HRP

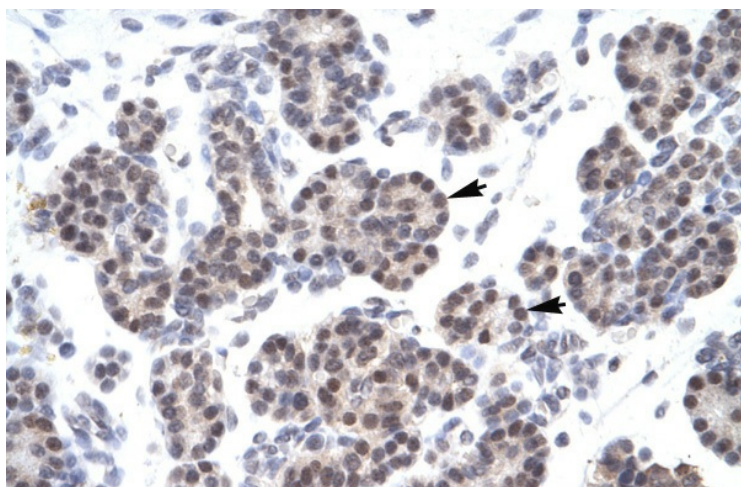
Secondary Antibody Dilution:
1:4000

Gene Name:

XRCC5

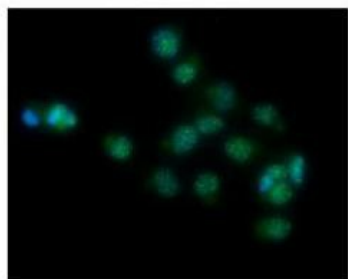
Submitted by:

Dr. Crissy Dudgeon, Ph.D., CINJ



Human Pancreas

XRCC5



Green : XRCC5
Blue : DAPI

See IHC 2 Data and Customer Feedback for more information

Sample Type:

Human lung adenocarcinoma cell line A549

Primary Antibody Dilution:

1:100

Secondary Antibody:

Goat anti-rabbit AlexaFluor 488

Secondary Antibody Dilution:

1:400

Color/Signal Descriptions:

XRCC5: Green DAPI:Blue

Gene Name:

XRCC5

Submitted by:

Dr. Crissy Dudgeon, Ph.D., CINJ