

Product datasheet for **TA355655**

Ku70 (XRCC6) Rabbit Polyclonal Antibody

Product data:

Product Type:	Primary Antibodies
Applications:	IHC, WB
Reactivity:	Human
Host:	Rabbit
Clonality:	Polyclonal
Immunogen:	The immunogen is a synthetic peptide directed towards the N terminal region of human G22P1
Specificity:	Expected reactivity: Dog, Guinea Pig, Horse, Human, Mouse, Rabbit, Rat Homology: Dog: 93%; Guinea Pig: 86%; Horse: 86%; Human: 100%; Mouse: 93%; Rabbit: 86%; Rat: 93%
Formulation:	Liquid. Purified antibody supplied in 1x PBS buffer with 0.09% (w/v) sodium azide and 2% sucrose. <i>Note that this product is shipped as lyophilized powder to China customers.</i>
Concentration:	lot specific
Purification:	Protein A purified
Conjugation:	Unconjugated
Storage:	For short term use, store at 2-8°C up to 1 week. For long term storage, store at -20°C in small aliquots to prevent freeze-thaw cycles.
Stability:	Shelf life: one year from despatch.
Predicted Protein Size:	70kDa
Gene Name:	X-ray repair complementing defective repair in Chinese hamster cells 6
Database Link:	NP_001460 Entrez Gene 2547 Human Q6FG89



[View online »](#)

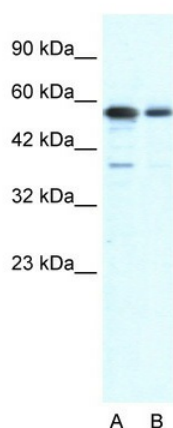
Background: The p70/p80 autoantigen is a nuclear complex consisting of two subunits with molecular masses of approximately 70 and 80 kDa. The complex functions as a single-stranded DNA-dependent ATP-dependent helicase. The complex may be involved in the repair of nonhomologous DNA ends such as that required for double-strand break repair, transposition, and V(D)J recombination. High levels of autoantibodies to p70 and p80 have been found in some patients with systemic lupus erythematosus.

Synonyms: CTC75; CTCBF; D22S671; D22S731; G22P1; KU70; ML8; OTTHUMP00000199333; OTTHUMP00000199349; TLAA

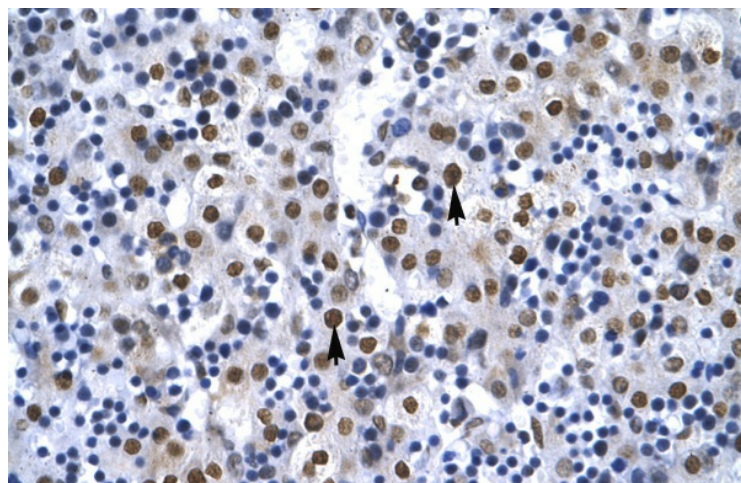
Protein Families: Druggable Genome, Transcription Factors

Protein Pathways: Non-homologous end-joining

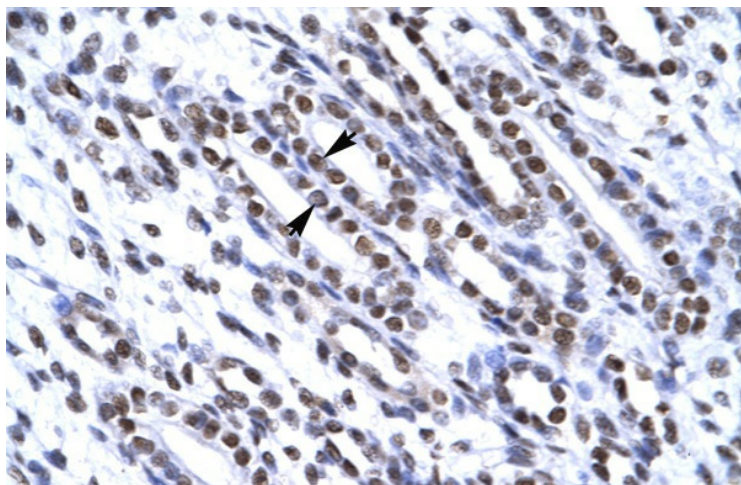
Product images:



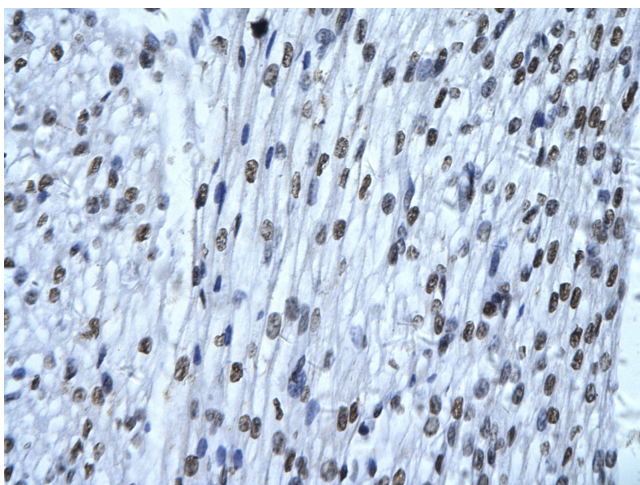
WB Suggested Anti-G22P1 Antibody Titration:
0.6ug/ml
ELISA Titer: 1:312500
Positive Control: HepG2 cell lysateXRCC6 is supported by BioGPS gene expression data to be expressed in HepG2



Human Liver



Human kidney



Rabbit Anti-XRCC6 Antibody
Catalog Number: ARP34117
Paraffin Embedded Tissue: Human cardiac cell
Cellular Data: Epithelial cells of renal tubule
Antibody Concentration: 4.0-8.0 ug/ml
Magnification: 400X